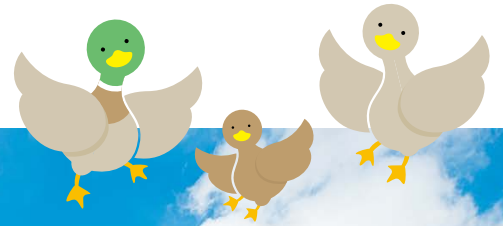


# 5 Reasons to Choose Keio SFC

**GIGA**(Global Information and Governance Academic) Program

- Faculty of Policy Management
- Faculty of Environment and Information Studies



# 5 Reasons to Choose KEIO SFC (Shonan Fujisawa Campus)

# 1

## Become skilled in creating the future

SFC provides an education, whereby students are encouraged to consider what the problems are in modern society and find their solutions, as opposed to being provided with problems and instructed in the correct answers. The campus boasts cutting-edge technologies and facilities, to support research and communication.



# 2

## Build your own curriculum

A student's passion and drive are never hindered at SFC. The Super Flexible Curriculum allows students to learn in a way they find most suited to their personal themes and goals. Students who have the drive and skills can join seminars from their first year, and students in their fourth year can go back to learn the basics. You will be free to take courses and seminars from both the Faculty of Policy Management and the Faculty of Environment and Information Studies. Learning takes many forms at SFC, including numerous group work and fieldwork opportunities.

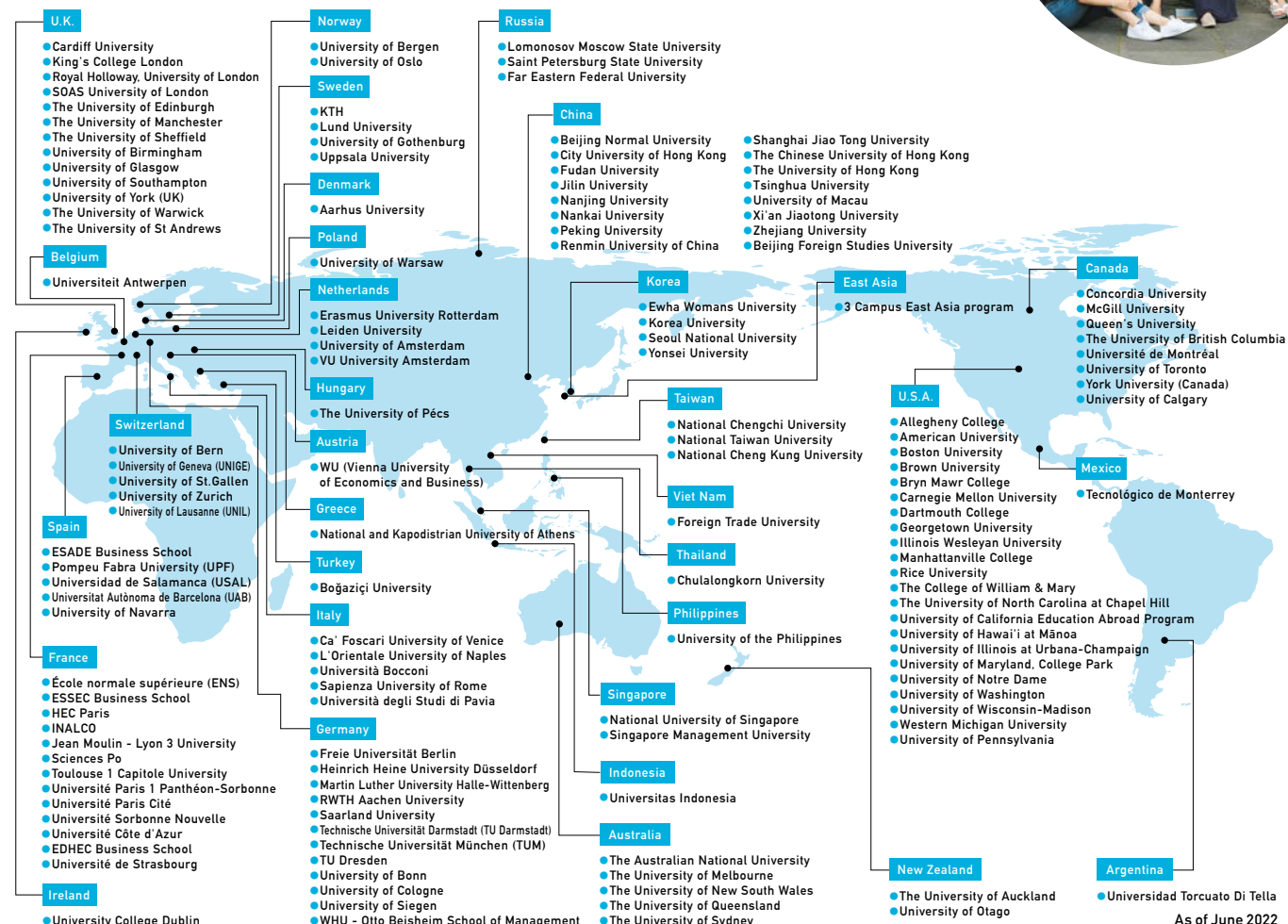
# 3

## Learn in a truly diverse environment

The students and professors who come to SFC from all over the world have diverse backgrounds and interests. Undergraduate and graduate students interact on the same campus, and they often inspire each other when sharing ideas. There are also many opportunities for studying at major universities outside Japan, and eleven different languages are offered for study.



## Partner Institutions for student exchange program



- Faculty of Policy Management
- Faculty of Environment and Information Studies

# 4

## Focus on your studies in beautiful surroundings

SFC is located about 90 minutes from central Tokyo. Surrounded by nature, the campus gives you the luxury of studying while always being aware of the four seasons. Cherry blossoms herald the spring, lush new green signals the start of summer, foliage paints the campus with autumn colors in the fall, and on clear days in the winter, snow-capped Mt. Fuji makes an unforgettable appearance. Students at SFC can enjoy a safe and peaceful campus life not available to students in the city. They relax on the lawn between classes, go jogging around campus, and meditate while watching the ducks in the campus pond.



# 5

## Build lifelong bonds and networks

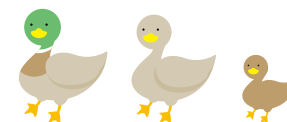
At SFC, students and professors create strong bonds as they work closely together on research. In addition, Keio University is traditionally well known for having the strongest and most wide-ranging alumni network in Japan. The paths that SFC graduates take reach all parts of society: employees at corporations in every sector, entrepreneurship, government employees, engineers, researchers, artists, architects, and athletes.

## Degree Program offered in English (GIGA Program) <https://giga.sfc.keio.ac.jp/>



The GIGA (Global Information and Governance Academic) program is a four-year undergraduate degree program taught in English, offered by the Faculty of Policy Management and the Faculty of Environment and Information Studies. Students who have the Japanese language skills can also select courses from among the many offered in Japanese. You can go through the admissions process without ever needing to be in Japan.

## Fields of Research at SFC



### Novel Computing and Communication Systems

- Internet Systems and Applications
- System Software and Information Security
- Ubiquitous Computing and Networking
- Knowledge and Information Systems

### Design Engineering and Media Art

- Visual and Music Design
- Product and Fashion Design
- Space and Communication Design

### Advanced Biosciences

- Environmental Biotechnology
- Biomedical Science
- Genome Science
- Systems Biology

### Environmental Design

- Global Environment and Technologies
- Spatial Informatics
- Ecology and Landscape
- Architecture and Urban Design

### Human Environment

- Cognitive Science
- Sports and Skill Sciences
- Ergonomics and Human Interface
- Sociology and Psychology

### Policy Design

- Economics and Public Finance
- Public Policy-making and Society
- Law and Institution

### Social Innovation

- Social Entrepreneurship
- Social Venture Management
- Designing Information Society

### International Strategy

- International Political Economy
- Regional Strategy
- Human Security
- Language, Culture and Communication

### Business and Administration

- Business and Management Strategy
- Financial Engineering and Valuation
- Career Development

### Sustainable Governance

- Environmental Policy
- Urban and Local Policy
- Housing and Community Policy

Red circles indicate main fields of research in the Faculty of Environment and Information Studies.

Blue circles indicate main fields of research in the Faculty of Policy Management.

# Annual Schedule

Keio University Shonan Fujisawa Campus uses a semester system. The spring semester runs from April 1st to September 21st, and the fall semester runs from September 22nd to March 31st.



## A Day at SFC

**7:00**

I wake up, have my morning coffee, and read the news. I live at a dorm near the station, so depending on the weather, I take the bus or ride a bike to campus.

**9:00**

As a Biomedical Science student, I have a mix of classes in English and Japanese. When I don't have on-campus lectures, I take my online classes in a group study room at the Media Center or, on sunny days, I sit by Kamoike. Every inch of SFC is a classroom in itself!

**12:00**


Every student's favorite time of the day: lunch break! I meet up with my friends and we take turns trying out menu items at the cafeteria, Ladybird café, and Subway.

**13:00**

During my free periods, I like to go to the campus gym to take a break from schoolwork. I find myself concentrating in lectures better after a good workout! Other times, I do volunteer work for Japanese organizations that equip disempowered sectors with the opportunities they need to incite positive change.

**15:00**

The Advanced Biosciences Seminar meets twice per week! On Tuesdays, expert scientists present a wide array of leading research and scientific frontiers for us to widen our horizons. On Fridays, I consult my professors to discuss research opportunities as well as my own experimental activities.



**Lianne**  
Faculty of Environment and Information Studies  
Enrolled in 2020

While the Keio education gives me the push and skillset I need to be in the forefront of the sciences, it is in SFC where I am presented the opportunity to see the world differently.

I've always known that I wanted to be a scientist, even before matriculating to SFC, but what I didn't know was that science could be examined from lenses other than technical — especially when it comes to exploring and experiencing the fields of neuroscience and bioinformatics. My professors and research mentors have instilled in me the great value of childlike wonder to approach the world, and to be humane to solve its problems.

Keio has taught me to dare mighty things, in the hopes that, in the great that we create, we can influence the future.

**18:00**

I like to keep busy with extracurriculars, too! I serve as the Vice President of the Association for International Students (AIS), as well as a member of the Kenyukai Kendo circle.

**20:00**

After a long school day, I unwind by listening to jazz music, watching lifestyle vlogs, and having dinner with friends at the dorm cafeteria. I also get in touch with loved ones from back home to complete my day!

## Number of International students

2,082 international students from more than 80 countries and regions are now studying at Keio University. Among them, 401 students study at SFC.

Country	Number	Country	Number	Country	Number	Country	Number	Country	Number	Country	Number
China	217	Taiwan	13	Viet Nam	4	Singapore	3	Germany	3	France	3
Korea	77	United States	6	Hong Kong	4	Morocco	3	Canada	3	Others	36
Indonesia	15	India	5	Philippines	3	Mongolia	3	New Zealand	3	Total	401

The number of GIGA students (students who were accepted through the Admissions for the GIGA Program) is currently over 200 and increasing year by year.

(As of June 2022)

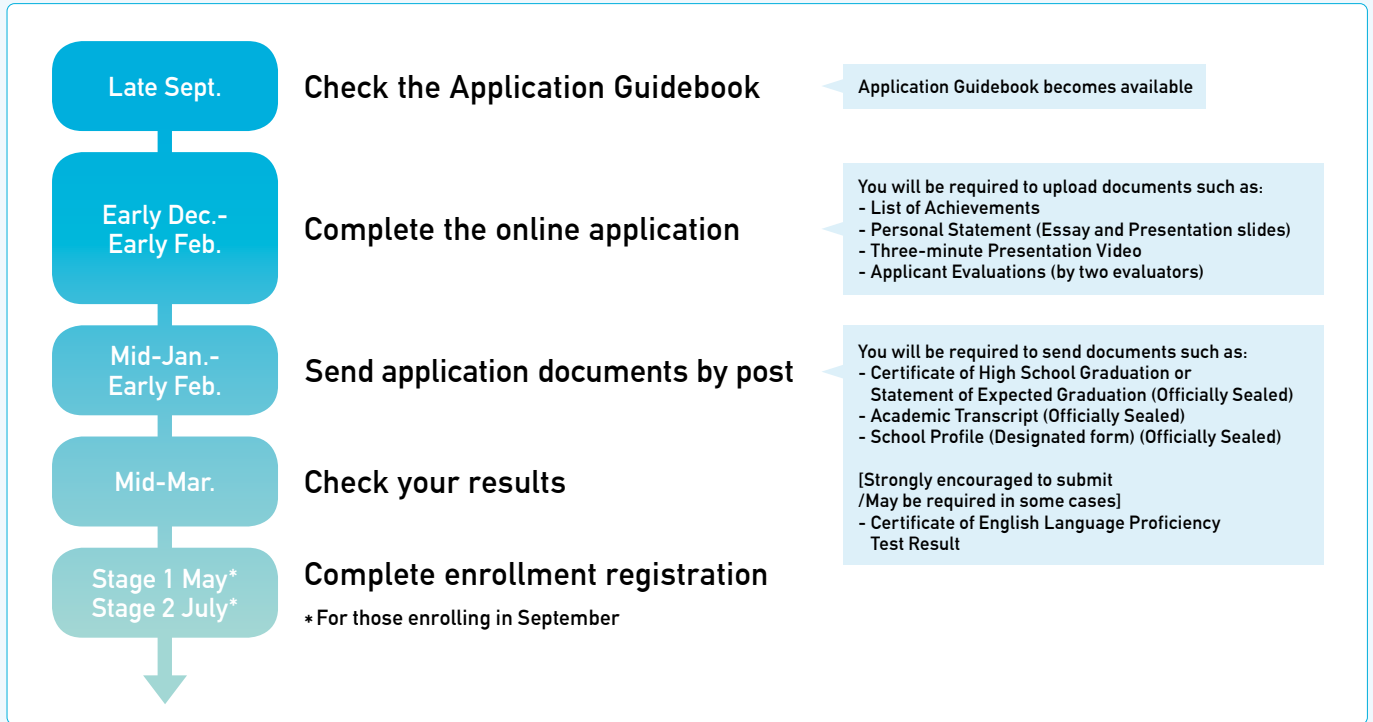
# How do I apply to the GIGA Program?

## Eligibility

If you have completed, or are expected to complete, 12 years or more of formal education, you are eligible to apply to the GIGA Program. Some applicants may be required to submit scores from standardized tests and/or a certificate of results from an English language proficiency test. Please check the Application Guidebook for details.

## Application Procedures

The application process involves an online application portion as well as submission of documents by post.



**There is no interview or written examination. Applicants do not need to visit Japan before enrollment.**

If you would like to apply to the GIGA Program, please make sure to check the Application Guidebook for details.  
[https://www.sfc.keio.ac.jp/en/admissions/undergraduate/ao\\_giga.html](https://www.sfc.keio.ac.jp/en/admissions/undergraduate/ao_giga.html)



## Academic Fees and Living Costs

<https://giga.sfc.keio.ac.jp/cost/academic-fees/>



Academic Fees for One Year	Living Costs	Total Costs for One Year
New student: JPY 1,631,350~USD 12,550 From the second year onward: JPY 1,431,250~USD 11,010	Per month: JPY 124,000~USD 954 Per year: JPY 1,488,000~USD 11,446	New student: JPY 3,119,350~USD 23,995 From the second year onward: JPY 2,919,250~USD 22,455

(As of 2023 / Rate JPY 130=USD 1)

## Contact

E-mail:

[sfc-global@sfc.keio.ac.jp](mailto:sfc-global@sfc.keio.ac.jp)



## Scholarships

Application for the following three scholarships can be made only at the time when you apply to the GIGA Program described above. Scholarship award notification will be made at the same time successful applicants to the GIGA Program are announced.

<https://giga.sfc.keio.ac.jp/cost/scholarship-information/>



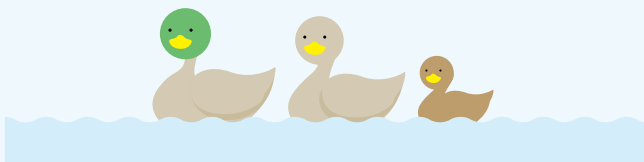
### Scholarships Exclusively for GIGA Program International Students (excerpt)

Japanese Government (MEXT) Scholarship	Amount: Application Fee, Admission Fee, Academic Fees for one year, Monthly living cost and travel costs Renewable: Up to four years (subject to annual review such as a required GPA above 2.3)
Mentor Mitakai Scholarship	Amount: Admission Fee, Academic Fees for one year Renewable: Up to four years (subject to annual review)
MASATADA KOBAYASHI Scholarship for International Students	Amount: JPY 1,000,000 (USD 8,696)/year for academic fees Renewable: Up to four years (subject to annual review)

(As of 2023 / Rate JPY 130=USD 1)

After enrollment, there are more than 100 scholarships for Japanese/international students.

<https://www.students.keio.ac.jp/en/sfc/scholarships/unique/index.html>



# FAQ

**Q** Can you tell me about Keio University?

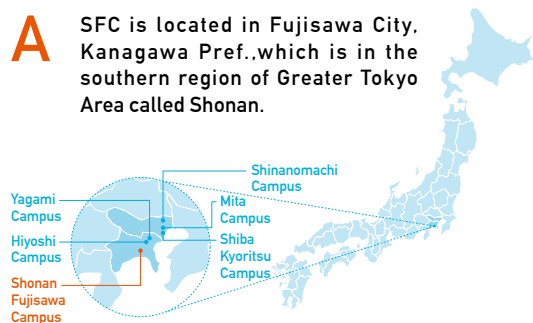
**A** Established in 1858 by Yukichi Fukuzawa, Keio has a history as Japan's very first private institution of higher learning. Approximately 33,000 students study at Keio University's 10 undergraduate faculties and 14 graduate schools located among 6 campuses throughout the Greater Tokyo Area. SFC is one of those campuses.

For more information, refer to:  
<https://www.keio.ac.jp/en/about/>



**Q** Where is Keio University Shonan Fujisawa Campus located?

**A** SFC is located in Fujisawa City, Kanagawa Pref., which is in the southern region of Greater Tokyo Area called Shonan.



**Q** What level of Japanese is required for acceptance into the GIGA Program?

**A** There are no Japanese language requirements for entering the University or for applying to the GIGA Program.

**Q** Will I be able to study Japanese at SFC?

**A** All levels of Japanese language classes are offered, from beginner to advanced, to meet the individual needs of international students. Outside of classes, free study support services are offered. The curriculum is designed so that even students who have no prior Japanese language skills can achieve N2-level Japanese language skills if they take Japanese language courses for four years.

**Q** Are there on-campus student dormitories?

**A** The H Village is the newest on-campus dormitory housing around 300 students. Five students will live together in one unit, allowing them to experience a "learn while you live, and live while you learn" lifestyle. Also, there are many apartments and privately owned dormitories located near Keio University SFC.

For more information, refer to:  
<https://h-village.sfc.keio.ac.jp/en/>



**Q** Can you tell me about graduates of SFC?

**A** About 70% of graduates of the Faculty of Policy Management and the Faculty of Environment and Information Studies go on to work in corporations in a vast array of sectors. Almost 20% go on to graduate studies, and about 10% choose other paths. The large number of graduates who become entrepreneurs is a defining characteristic of SFC.

**Q** What is the minimum required band score on standardized tests for admission to the GIGA Program?

**A** There is no minimum required band score and the average score of successful applicants is not made public.

**Q** Can I apply from outside of Japan?

**A** You do not have to be in Japan to apply to the program.

For more information, refer to:

[https://www.sfc.keio.ac.jp/en/admissions/undergraduate/ao\\_giga.html](https://www.sfc.keio.ac.jp/en/admissions/undergraduate/ao_giga.html)



**Q** Can international students participate in extracurricular activities?

**A** A wide range of extracurricular activities, including sports, cultural, volunteer-related, etc., is available, and most students find a student organization or club they can wholeheartedly participate in.

**Q** Can international students work part-time?

**A** To hold a part-time job in Japan, permission must first be obtained from the Immigration Bureau of Japan. Part-time jobs for international students are limited to 28 hours per week. In general, the types of jobs open to international students require some Japanese language skills.

**Q** Can international students take courses conducted in Japanese?

**A** Yes. They can take courses offered in both English and Japanese.

