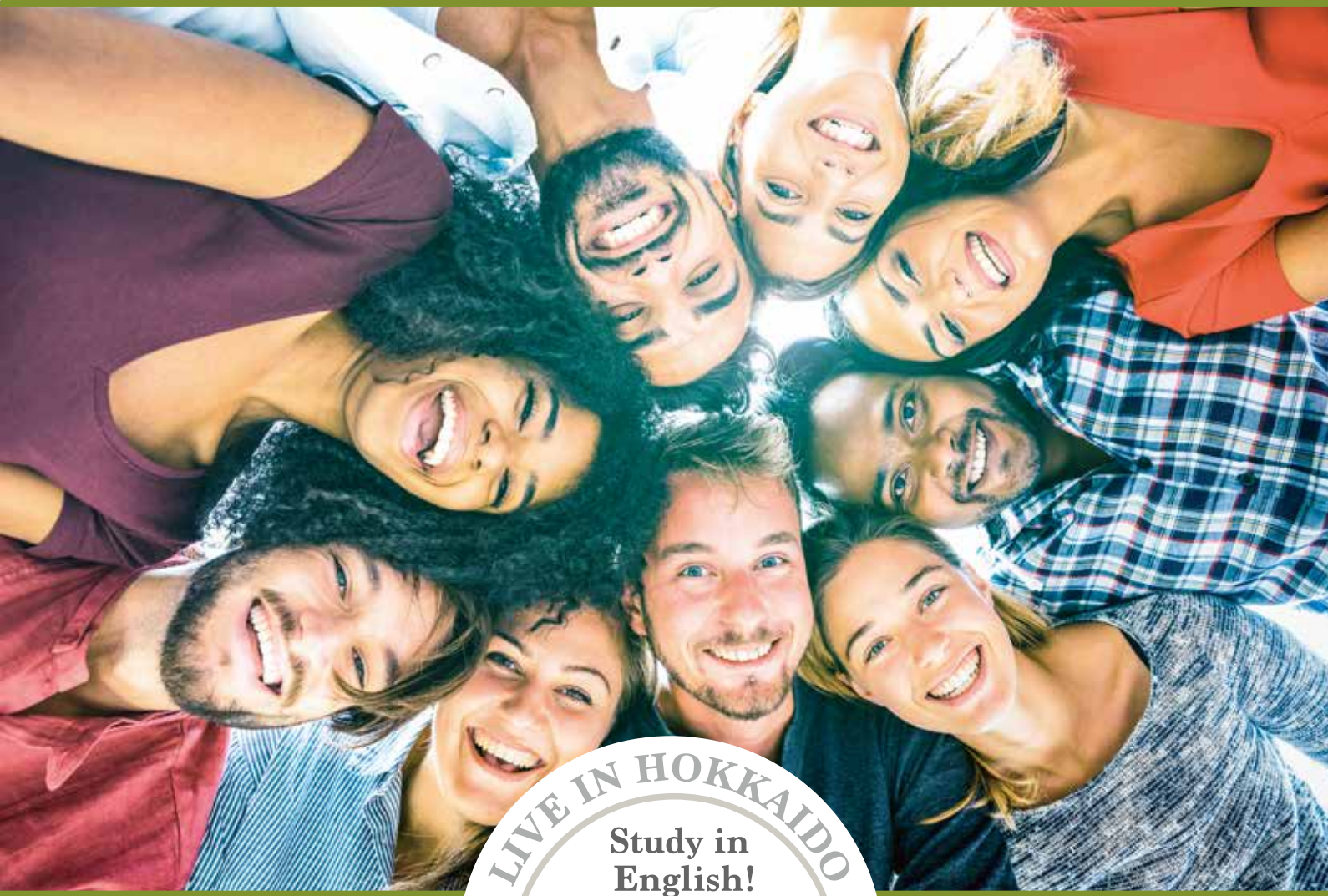


DEGREE PROGRAMS IN ENGLISH

2023-2024



HOKKAIDO UNIVERSITY



HOKKAIDO
UNIVERSITY

HOKKAIDO UNIVERSITY OVERVIEW



Sapporo Campus



Hakodate Campus



12 Undergraduate and 21 Graduate Schools—the Most Comprehensive Curriculum of National Universities

Hokkaido University's 12 undergraduate and 21 graduate schools cover almost all areas of the humanities, social and natural sciences, and our research leads Japan and the world. Our faculty of over 3,900 allows us to offer our students highly specialized knowledge from researchers in diverse fields.

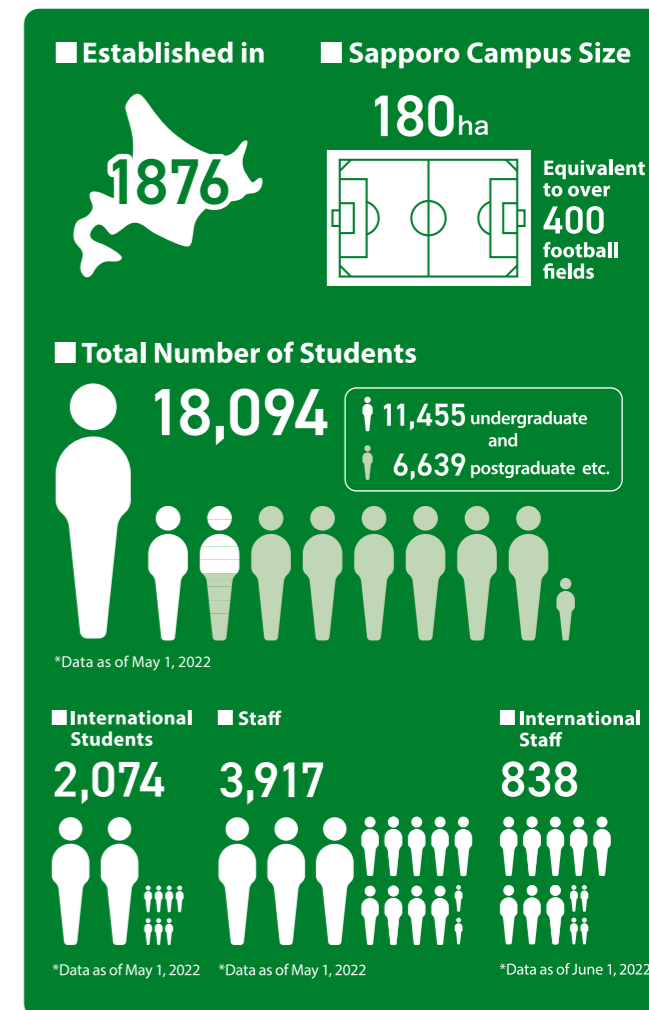


Safe and Comfortable Student Life

International Students new to Japan can thrive by taking advantage of the various forms of support we offer. For example, we have a Supporter System in place where both Japanese and foreign students contribute their experiences to help new students settle in quickly; and the International Student Support Desk is open daily to assist with matters in a timely manner.

Great Location

Hokkaido University is located in the northern-most major island in Japan. Its main campus is located in Sapporo which is one of the largest cities in Japan and all faculties and schools except for one are located there. Faculty of Fisheries Sciences is located in Hakodate, south-west of Hokkaido Island. The natural bounty of Hokkaido is an attraction for tourists, and our Sapporo campus has been chosen as "most favorite campus" in a questionnaire by a major Japanese newspaper.



One of The Seven Major National Universities In Japan

Hokkaido University was established in 1876 as Sapporo Agricultural College, and was the first higher education institution in Japan to award a bachelor's degree. It later became Hokkaido Imperial University and has since been recognized as one of the seven major universities in Japan.

Extensive Career Support

Because we are a comprehensive university, our graduates are able to pursue careers in industry, government, and international organizations. We can also boast of substantial career support for our international students that endeavor to work in Japan. Our Career Center offers guidance and preparation for job hunting in Japan such as how to write an entry sheet and interview training.

Top-Level Research

Hokkaido University can boast of top-level research in a variety of fields; representative of this is the Nobel Prize in Chemistry that Emeritus Professor Akira Suzuki was awarded in 2010 for his work in catalytic chemistry. In addition, we were ranked in the top 100 in the QS World University Rankings 2022 in the fields of Agriculture and Forestry, Chemistry, and Earth and Marine Sciences.

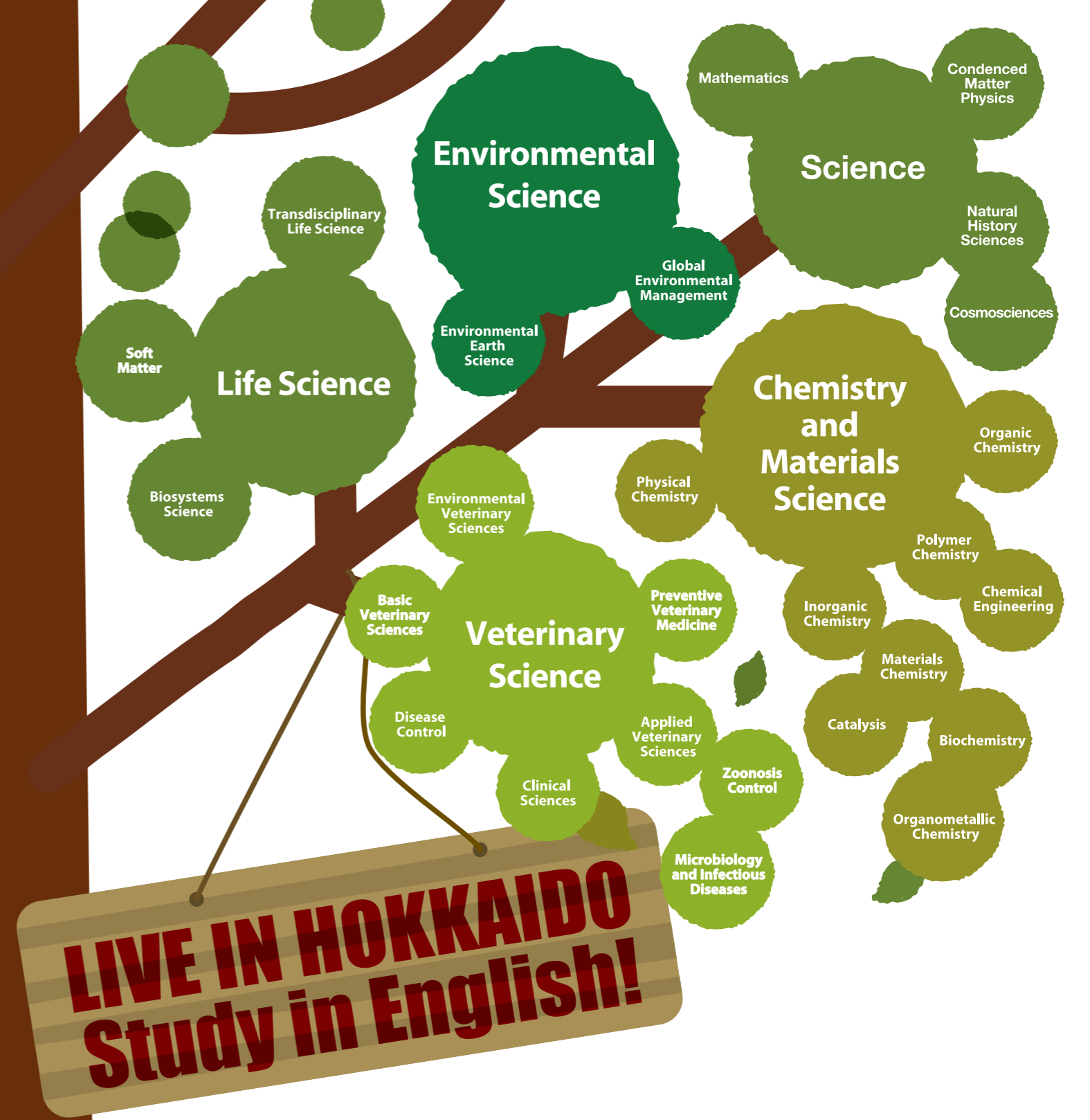
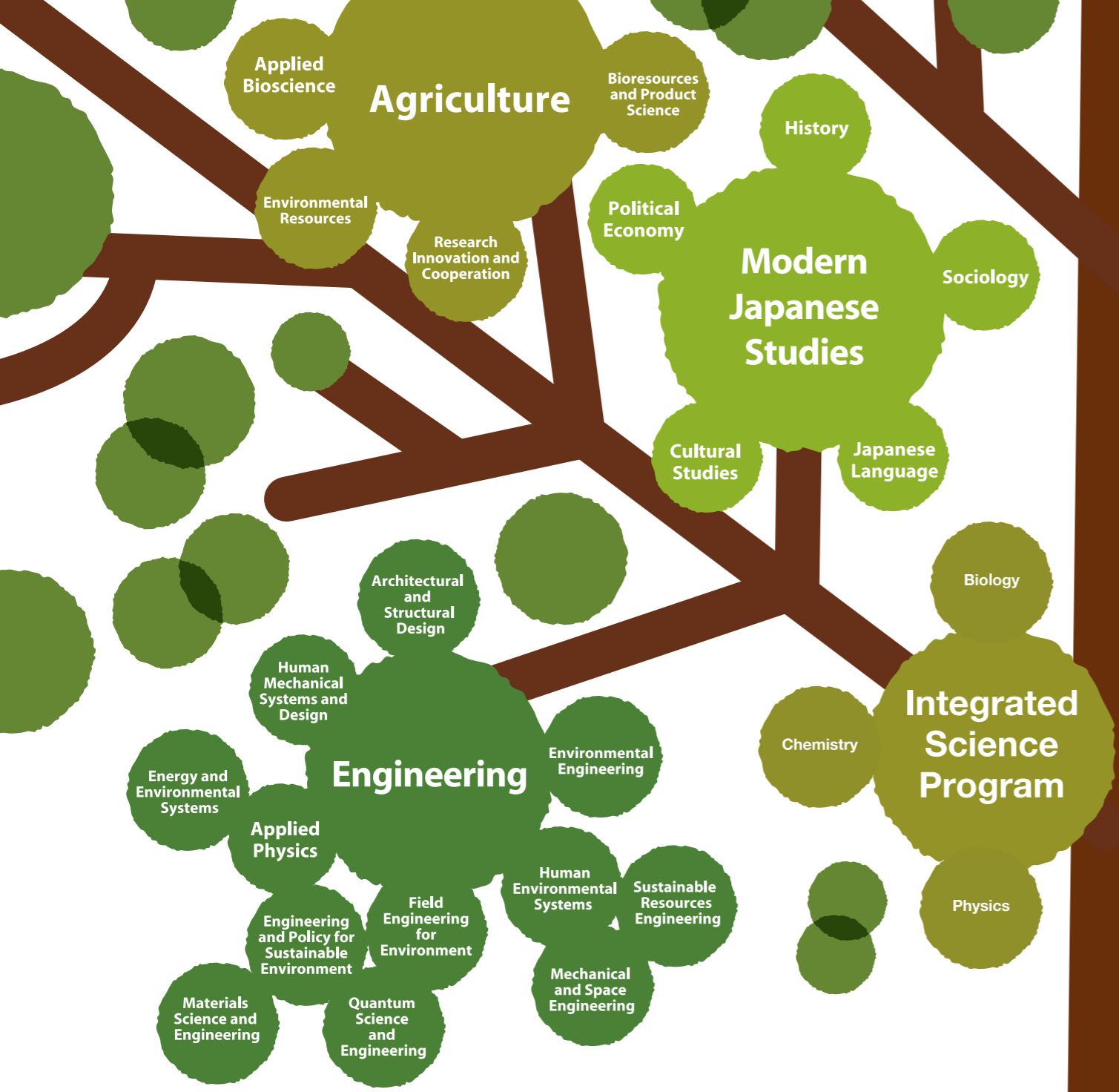
CALENDAR

Academic Year	April 1 - March 31
1st Semester	April 1 - September 30
Summer vacation	Early August - Late September
University Foundation Day	August 14
2nd Semester	October 1 - March 31
Winter vacation	Late December - Early January

*Holiday periods differ slightly depending on the faculty or graduate school

CONTENTS

MODERN JAPANESE STUDIES PROGRAM	P3.4
INTEGRATED SCIENCE PROGRAM	P5.6
e ³ ENGLISH ENGINEERING EDUCATION PROGRAM	P7.8
GLOBAL EDUCATION PROGRAM FOR AGRISCIENCE FRONTIERS	P9.10
INTERNATIONAL COURSE IN GRADUATE SCHOOL OF SCIENCE	P11.12
TRAINING PROGRAM FOR INNOVATORS IN LIFE SCIENCES	P13.14
INTERNATIONAL PROGRAM OF PhD DEGREE ADVANCED GRADUATE SCHOOL OF CHEMISTRY AND MATERIALS SCIENCE	P15.16
SPECIAL TRAINING PROGRAM FOR FOSTERING LEADING RESEARCHERS TO DEVELOP GLOBAL BIORESOURCE PLATFORM	P17.18
GLOBAL ENVIRONMENTAL MANAGEMENT / ENGLISH PROGRAM OF ENVIRONMENTAL EARTH SCIENCE FOR SUSTAINABLE SOCIETY	P19.20



MODERN JAPANESE STUDIES PROGRAM



20

students admitted per year

The Modern Japanese Studies Program (MJSP) is a four-year bachelor's degree program, preceded by a six-month Intensive Japanese Course for those without sufficient Japanese to enter the bachelor's degree program directly. MJSP gives a comprehensive education in the Japanese language, history, culture, society, and political economy. The program has four main characteristics; 1) Intensive study of the Japanese language – you should be completely fluent on graduation; 2) The study of Japan in four main academic disciplines – history, cultural studies, sociology and political economy; 3) Co-learning with Japanese students – you will take many classes with your Japanese peers; and 4) A flexible curriculum that allows you to discover your Japan from the unique and multicultural vantage point of Japan's northernmost island. In the 21st Century, Asia will increasingly take center stage in global affairs. Your bilingual and multicultural education on MJSP provides the skills for various career paths.

FACULTY



SASADA HIRONORI
PROFESSOR

People from all around the world come to study on MJSP. The international atmosphere is a fascinating learning experience in itself. We are all joined, however, by our common, deep interest in Japan. There is no better place to learn about Japan than actually in Japan. Our ambitious and defining educational aim is for all MJSP students to be able to take regular university classes in the Japanese language alongside their Japanese peers. We share our curriculum in English with Nitobe College, an international education program for students in other faculties. Extensive educational integration with the Japanese student population from the first year of the degree program is another key philosophy of MJSP.



FIND OUT
WHAT
STUDENTS
THINK

VAN THI THUY NGUYEN (Vietnam)

I came to Hokkaido University with the dream of becoming a bridge between Vietnam (my home country) and Japan after graduation. While doing job hunting, I deeply felt the advantages of flexible and comprehensive curriculum equipped by MJSP. Despite no prior Japanese language background and uncertainties in choosing a specific major in the beginning, I am now confident to participate in group discussions with Japanese peers and know precisely which academic disciplines I am most interested in, thanks to a range of various classes provided by different faculties. My current future plan is to work for several years and then pursue an MBA degree to maximize business-related capabilities.

MJSP AT A GLANCE

STEPS TO ENTRY

DEGREE TITLE:

Bachelor's Degree (in the field of Japanese Studies)

PROGRAM LENGTH:

4 years (4.5 years including the Intensive Japanese Course)

STARTING DATE:

October (Intensive Japanese Course + Bachelor's Degree program)
April (Bachelor's Degree program only)

ENTRY REQUIREMENTS:

- Individuals who have citizenship other than Japanese are eligible to apply. Individuals who have Japanese permanent resident status are not eligible to apply.
- 12 completed years of education in a foreign country or at an approved international school in Japan OR will hold a high school qualification deemed to be equivalent by the time of entrance.
- Mother tongue English OR four years or more of secondary education (at junior or senior high school, etc.) with English as the primary language of instruction OR English ability of IELTS 6.5, TOEFL-iBT 79, TOEFL-iBT Home Edition 79 or higher.
- Japanese ability: none for Intensive Japanese Course entry; intermediate Japanese for Bachelor's Degree entry (determined by an entrance exam); clear evidence of aptitude in foreign languages is strongly preferred.
- A high school academic record that would enable you to attend a leading research-intensive university in your own country.

1. CONNECT WITH US:

Read carefully all the information on our website. Feel free to ask questions using "Contact Us" form.

2. CONFIRM YOUR POSSIBLE START DATE:

Applicants with intermediate Japanese can apply for April (Bachelor's Degree) entry. Exemption from the Intensive Japanese Course requires passing the Japanese interview taken as part of the entrance exam. All other applicants apply for October (Intensive Japanese Course) entry.

3. APPLY:

Register online in October-November (1st call for applications) OR February (2nd call for applications) and send the required documents by post to arrive by early to mid-December (1st call) or mid-March (2nd call). Check the Application Guidelines for the exact deadlines, which are strictly enforced. There is a ¥5,000 application fee.

4. INTERVIEWS:

Interviews are held in January (1st call) and April (2nd call) via Skype.

SCHOLARSHIPS/SUPPORT

FEES:

Tuition fee for Intensive Japanese Course is ¥181,200 (6months) and for Bachelor's degree program is ¥535,800 a year. However, we provide considerable financial support to offset the cost of your education.

Intensive Japanese Course

We are planning to waive the enrollment fees for the Intensive Japanese Course.

1st Year

We are planning to waive the entire enrollment and tuition fees for all enrollees in the Modern Japanese Studies Program.

2nd-4th Year

In the second year and thereafter, 100% or 50% of the tuition fees will be waived for selected students based on academic performance. Students who do not receive fee waivers during the second to fourth years may apply for the university's tuition fee exemption program (25%, 50%, or 100%).

STUDENT SUPPORT:

The staff will help you adapt to life in Japanese society, provide opportunities to deepen your intercultural understanding, and facilitate interaction with Japanese students. Things may not always go smoothly, but the International Student Support Desk and university's bilingual counseling service is always there to help you.

The detailed list of entry requirements is available on the Modern Japanese Studies Program website at <https://www.oia.hokudai.ac.jp/mjsp>



CONTACT US



Modern Japanese Studies Program Office
☎ +81-(0)11-706-8048 • 8049
✉ mjosp@oia.hokudai.ac.jp
Admission Center (for Admission Inquiry)
☎ +81-(0)11-706-8045
✉ adm-mjosp@academic.hokudai.ac.jp

<https://www.oia.hokudai.ac.jp/mjsp/>

Hokkaido University's Modern Japanese Studies Program

[mjosp.hokkaido](https://www.instagram.com/mjosp.hokkaido) [@MJSP_Hokkaido](https://twitter.com/MJSP_Hokkaido)

INTEGRATED SCIENCE PROGRAM

The Integrated Science Program is a cross-disciplinary educational science program for international students interested in pursuing a degree in the natural sciences. The program's strong cross-disciplinary nature aims to give students an excellent broad scientific education across the core scientific disciplines (physics, chemistry and biology) in the School of Science, while allowing them to specialize in their chosen fields in later years in accordance with their own interests. While students' main scientific studies are entirely in English, a multitude of additional courses such as business skills courses or leadership and management skills courses will be available in the liberal arts and Japanese language to ensure students receive a rich and fulfilling education while at Hokkaido University.

Key Characteristics:

- 1) Study at one of Japan's oldest and most prestigious universities
- 2) Courses taught by a diverse international faculty in English
- 3) A range of scholarships available



FACULTY

A warm welcome to the ISP! We are proud to introduce you to our program that welcomes international students to Sapporo to join our various science programs at Hokkaido University. We hope you will join us and gain some great experiences, as our diverse international faculty guide you on your journey into becoming professional scientists. Students can look forward to interactive lectures and seminars, independent laboratory projects, and even gain experience with computational scientific methods. Despite the copious amounts of snow, Hokkaido University offers a warm and welcoming environment to those from all backgrounds, and we strive to give students a fulfilling and thoroughly enjoyable experience.



SETO OSAMU
ASSOCIATE PROFESSOR, ISP COORDINATOR



**FIND OUT
WHAT
STUDENTS
THINK**

RADOVAN KOSTADINOV (North Macedonia)

When I was twelve, I became fascinated with nature from the internet, as well as Japanese culture from anime and origami. With these two factors in mind, I chose to study Biology in Hokkaido University's ISP program. It gave me the opportunity to study the natural sciences in English, while immersing myself in Japan's rich culture and its language. After my bachelor's, my goals are to pursue a master's degree at Hokkaido University in Environmental Biology in order to protect our planet from pollution and to become fluent in Japanese. I recommend anyone who has a passion for science and Japanese culture to come and study at ISP.

ISP AT A GLANCE

DEGREE TITLE:
Bachelor's Degree (Science)
Master's Degree (Depends on your study field)

PROGRAM LENGTH:
4 years (Bachelor's) + 2 years (Master's)

*We offer the opportunity to graduate earlier with Hokkaido University's advanced graduation initiative.

ENTRY REQUIREMENTS: (As of the application for October 2023 enrollment)

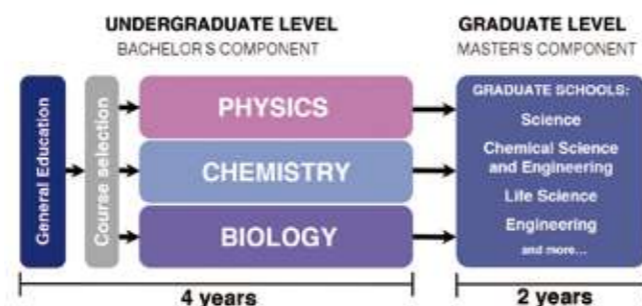
- Those who have Japanese citizenship or Japanese permanent resident status are not eligible to apply.
- 12 completed years of education in a foreign country or at an approved international school in Japan OR will hold a high school qualification deemed to be equivalent by the time of entrance.
- English ability; being a native English speaker, having received 4 years or more of secondary education (at junior or senior high school, etc.) with English as the primary language of instruction, or holding a score of IELTS (Academic Module) 6.0, TOEFL-iBT 79, TOEFL-iBT Home Edition 79, or higher.

*Please make sure to read the latest Application Guidelines on our website for the latest information on the requirements.

*Japanese ability is not required for entry.

COURSE STRUCTURE

The ISP program fundamentally consists of a four-year Bachelor's degree and a two-year Master's degree. For the first six months of the Bachelor's component, the students take fundamental courses of natural science, liberal arts and Japanese. After that, they will start obtaining more specialized knowledge and practical skills in their chosen fields (physics, chemistry or biology). The Master's degree will include active research components, where the students will be affiliated with one of the university's prestigious graduate schools to learn the techniques and skills to flourish as scientists or researchers in, or out of academia.



For further details, please visit our website: <https://www.oia.hokudai.ac.jp/isp/>



SCHOLARSHIPS/SUPPORT

FEES:

Tuition fee for Bachelor's degree program is ¥535,800 a year. However, we provide considerable financial support to offset the cost of your education.

1st Semester

We are planning to waive the entire enrollment and tuition fees for all enrollees in the Integrated Science Program.

2nd Semester-7th Semester

In the second semester and thereafter, 100% or 50% of the tuition fees will be waived for selected students based on academic performance. Students who do not receive fee waivers during the second semester to the seventh semester may apply for the university's tuition fee exemption program (25%, 50%, or 100%).

STUDENT SUPPORT:

The staff will help you adapt to life in Japanese society, provide opportunities to deepen your intercultural understanding, and facilitate interaction with Japanese students. Things may not always go smoothly, but the International Student Support Desk and university's bilingual counseling service is always there to help you.

CONTACT US



Integrated Science Program Office
☎ +81-(0)11-706-8049 • 8048
✉ isp@oia.hokudai.ac.jp
Admission Center (for Admission Inquiry)
☎ +81-(0)11-706-8045
✉ adm-isp@academic.hokudai.ac.jp

🌐 <https://www.oia.hokudai.ac.jp/isp/>
📘 Hokkaido University's Integrated Science Program
📱 @ISPHokudai
📷 ISP.hokkaido

e³ ENGLISH ENGINEERING EDUCATION PROGRAM



250
courses offered
in English!

Application steps

- Select a research field and laboratory
- Prepare research proposal and other application documents
- Documents screening and online interview with potential supervisor
- Post original documents to e³ office

Students who fulfill all the requirements and show high academic achievements, including higher than average GPA, may be accepted based on documents screening and an online interview via e3(e-cube) Special Selection.

MASTER'S

The typical time required to complete this degree is 2 years.

ENTRY REQUIREMENTS:

In order to obtain entry into the Master's Program you MUST:

- Hold a four-year Bachelor's Degree
- Have good academic performance (ex. 80%, or 3.0 on a 4-point GPA Scale)
- Have English proficiency equivalent to IELTS (Academic Module) 6.0, TOEFL iBT 79 or TOEIC L&R 730

COMPLETION REQUIREMENTS:

In order to obtain this degree, you MUST:

- Obtain 30 credits from the English Curriculum
- Be supervised in English
- Submit a thesis in English
- Satisfy the requirements on conference presentations and/or publications set up by your division

*If your grade is below the minimum requirement you may need to take the entrance exam on campus.

DOCTORATE

The typical time required to complete this degree is 3 years.

ENTRY REQUIREMENTS:

In order to obtain entry into the Doctoral Program you MUST:

- Hold a four-year Bachelor's Degree and a Master's Degree
- Have good academic performance (ex. 80%, or 3.0 on a 4-point GPA Scale)
- Have English proficiency equivalent to IELTS (Academic Module) 6.0, TOEFL iBT 79 or TOEIC L&R 730

COMPLETION REQUIREMENTS:

In order to obtain this degree, you MUST:

- Obtain 10 credits from the English Curriculum
- Be supervised in English
- Submit a thesis in English
- Satisfy all publication requirements set out by the division.

For the detailed information on admission, please check program's web page <https://www.eng.hokudai.ac.jp/e3/>

CHOOSE YOUR FIELD

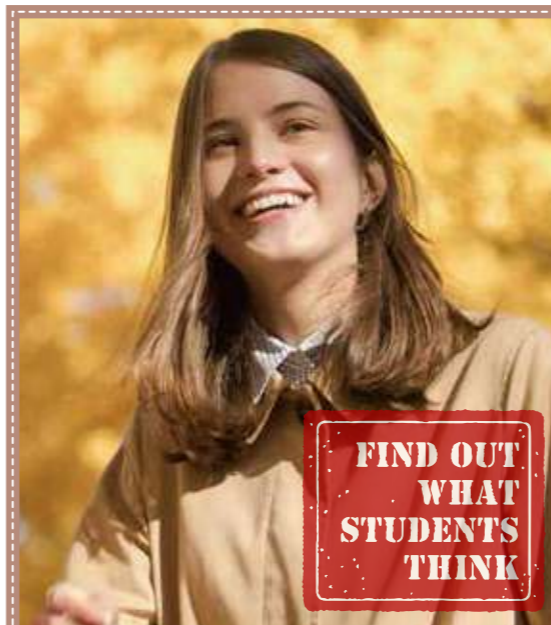
e³ comprises of 13 divisions which offer Master's and Doctoral degree courses.

- Applied Physics
- Materials Science and Engineering
- Mechanical and Space Engineering
- Human Mechanical Systems and Design
- Energy and Environmental Systems
- Quantum Science and Engineering
- Field Engineering for Environment
- Engineering and Policy for Sustainable Environment
- Architectural and Structural Design
- Human Environmental System
- Environmental Engineering
- Sustainable Resources Engineering
- Cooperative Program for Resource Engineering (Master's course only)

Hokkaido University's School of Engineering is the university's largest, with around 2,200 undergraduate students and 1,000 graduate students including a large proportion from overseas.

Hokkaido University's English Engineering Education Program(e³) is one of only a few programs offered in Japan that covers almost all fields in Engineering. Whatever branch of engineering you are interested in studying, you will find an engineering course at Hokkaido University that meets your needs. In our program, you will be studying engineering at one of Japan's most prestigious universities in an atmosphere where knowledge, research, and expertise is shared; where learning and intellectual growth are stimulated and cherished. If you're looking to share in the advanced knowledge in the field of engineering that Japan is renowned for, in a multi-cultural environment where English is the main spoken language, the e³ program is for you.

COURSE CONVENOR



FIND OUT WHAT STUDENTS THINK

ANASTASIIA PAUKAEVA (Russia) D3 Division of Architectural and Structural Design (graduated in December 2020)

I'm a 3rd-year Doctoral student. My study focuses on Urban Design and Architecture that would prevent from or adjust to the shrinking population of Northern cities. One of the most important reasons why I would recommend studying at Hokkaido University is the opportunity to work under the project that has real developing prospects and deals with the issues theoretically and practically. For example, our laboratory of Urban and Regional Design is responsible for city development and redevelopment projects such as Planning Integrated Compact Cities for Yubari. Besides, HU provides much latest technology for the researcher's works which ensure a more accurate analysis of the research like a Wind Tunnel represented by Hokkaido Northern Regional Building Research Institute. Additionally, I'm most grateful to the e³ program which provides study in English. The ability to speak Japanese is not necessary for your study since all staff speak English. I believe you can always rely on the support of your laboratory members in assisting your project or research especially if you are behind your schedule. After graduation I hope I will be able to serve my nation by imparting the cognition of international standards and other experiences both in teaching as well as in practical field.



TODOH MASAHIRO
PROFESSOR, GRADUATE SCHOOL OF ENGINEERING

Let me extend a warm welcome to you from Sapporo, Japan. For decades, Japanese engineering and technology have been at the cutting-edge and have helped revolutionize the way we live. For this reason many students have aspired to come and study in Japan but have been reluctant to do so because of the language barrier and the belief that Japan is an expensive country to live in. Our English Engineering Education program(e³) has made it possible for students from all over the world to come and share Japan's technological progress. Besides an environment where teaching and learning is carried out entirely in English, the cost of living in Sapporo is lower compared to other big cities in Japan. The family-like atmosphere of the program creates a bond between faculty, students, and alumni despite the fact that most are in different fields of specialization. We hope to see you become a part of the e³ family in the near future.

SCHOLARSHIPS/SUPPORT

Japanese Government (MEXT) scholarships:

Japanese government offers full-support scholarships for outstanding students (including monthly allowance of ¥145,000 for PhD or ¥144,000 for Master's program; recipients are exempted from tuition and admission fees). e³ accepts applicants through such frameworks as: Study-in-Japan Global Network Scholarship [regions with coordinator's office], Program for Indian railways professionals, Embassy nomination.

Support for privately funded students:

MEXT honors scholarship (reservation slot)

Financial assistance of ¥48,000/month (for a period of 6 or 12 month) is available for a number of newly enrolled Master's and Doctoral students with good academic performance accepted directly into e³ program through the special selection.

Tuition fee waivers – a discount of 25, 50 or 100% can be granted to the applicants in need.

Study support for Doctoral Students – full tuition fee support through the combination of tuition fee waivers and employment as research assistant is available.

e³ Grant for self-supported Doctoral students – a grant of ¥100,000 upon enrollment (one-time payment) is offered.

Programs funded by Japanese International Cooperation Agency (JICA):

e³ accepts applicants through JICA scholarship programs, including:

ABE Initiative – for young African professionals (54 African countries).

Kizuna Program in Sustainable Resource Development (mining engineering).

Scholarship program of Development Initiative for Road Asset Management

JDS Program (in the field of Transportation Infrastructure) - for government officials from Philippines.

M-JEED Program – for researchers and faculty members from participating institutions in Mongolia.

IITH-Japan FRIENDSHIP Scholarship – for graduates from Indian Institute of Technology Hyderabad .

SDGs global leader course – for students from ASEAN and Sub-Saharan Africa.

CONTACT US

<https://www.eng.hokudai.ac.jp/e3/>

<https://www.facebook.com/e3program.hokudai/>

e3program@eng.hokudai.ac.jp

+81- (0)11-706-8089

Search "e³ Hokkaido University"

GLOBAL EDUCATION PROGRAM FOR AGRISCIENCE FRONTIERS



The Graduate School of Agriculture aims to produce students who have both basic and specialized knowledge of agriculture by providing advanced, interdisciplinary, and comprehensive education and research opportunities that incorporate both the humanities and the sciences.

The Global Education Program for Agri Science Frontiers provides a unique combination of study fields such as food, health and environmental studies. The course is designed to meet the urgent global needs concerning research and development into the preservation and sustainable utilization of our limited resources on earth. Of all the Faculties and Graduate Schools of Hokkaido University, the School of Agriculture is the oldest in the University's history of more than 140 years. It was first established to assist in opening up the island of Hokkaido as a new frontier. Over the years it has become Japan's leading university in agricultural sciences and has produced a plethora of eminent alumni.

COURSE CONVENOR



SHINANO TAKURO
PROFESSOR,
RESEARCH FACULTY OF AGRICULTURE

Greetings from the Research Faculty of Agriculture. Our program is unique in focusing on education and research in targeted areas of the Graduate School of Agriculture - food production, environmental conservation, and food science - in addition to life science.

We have expanded life science centered programs two-fold to include field research activities and environmental disciplines, making this course one of the most exciting programs of its kind in Japan. Graduates of the program will have the good judgement needed to respond to the various issues facing all of humankind today, including stable food supplies, food safety, the preservation of the global environment, and biomass uses.

We welcome your application and look forward to seeing you on campus.



**FIND OUT
WHAT
STUDENTS
THINK**

HESHAN KODITHUWAKKU (Sri Lanka), Current student of the Doctor course, Graduate School of Agriculture

I am researching on dairy calves nutrition. The knowledge, skills, technology, and guidance provided by the graduate school of agriculture have helped me to think differently and engage in research in a pleasant learning environment. Furthermore, the frequent exposure to international researchers at graduate school and my laboratory keep me updated with new research trends and create new networks. The dairy industry is still developing in my country. I am confident that at the end of my studies, I can bring back huge knowledge and skills to develop the dairy industry of my country.

MASTER'S

The usual time required to complete this degree is 2 years.

ADMISSION: April or October

ENTRY REQUIREMENTS:

In order to obtain entry into the Master's Course you MUST:

- Consult with a professor prior to submitting the application
- Hold a bachelor's degree
- Have completed 16 years of education in a foreign country or in Japan
- Have a GPA requirement of 2.30 (3.00 as full score) during the applicant's most recently graduated/expected to graduate program
- Have English proficiency equivalent CEFR B2 level taken within 2 years

COMPLETION REQUIREMENTS:

In order to obtain this degree, you MUST:

- Obtain 30 credits
- Write a thesis in English based on research conducted during the course
- Do an oral defense in English
- Finish the thesis within 2 years

DOCTORATE

The usual time required to complete this degree is 3 years.

ADMISSION: April or October

ENTRY REQUIREMENTS:

In order to obtain entry into the Doctoral Course you MUST:

- Consult with a professor prior to submitting the application
- Hold a master's degree or passed a qualifying examination
- Have completed 18 years of education in a foreign country or in Japan
- Have a GPA requirement of 2.30 (3.00 as full score) during the applicant's most recently graduated/expected to graduate program
- Have English proficiency equivalent CEFR B2 level taken within 2 years

COMPLETION REQUIREMENTS:

In order to obtain this degree, you MUST:

- Obtain 12 credits
- Write a thesis in English based on research conducted during the course
- Do an oral defense in English
- Finish the thesis within 3 years

For more information, please visit the following link <https://www.agr.hokudai.ac.jp/spgp/application-procedure/application-procedure/>

CHOOSE YOUR DIVISION

AGRICULTURAL AND RURAL DEVELOPMENT/ APPLIED PLANT GENOMICS/ CROP SCIENCE

Division of Agriculture, Frontiers in Production Sciences: PATHOGEN-PLANT INTERACTIONS/ PLANT BREEDING/ PLANT NUTRITION/ VEHICLE ROBOTICS/ AGRICULTURAL AND FOOD PROCESS ENGINEERING/ AGRICULTURAL BIO-SYSTEM ENGINEERING/

Division of Agriculture, Frontiers in Biosciences: APPLIED MOLECULAR ENTOMOLOGY/ MOLECULAR BIOLOGY/ MOLECULAR ENZYMOLOGY/ MOLECULAR AND ECOLOGICAL CHEMISTRY/ NATURAL PRODUCT CHEMISTRY/ BIOCHEMISTRY/ MICROBIAL PHYSIOLOGY/ NUTRITIONAL BIOCHEMISTRY/ FOOD BIOCHEMISTRY/ ANIMAL GENETICS & REPRODUCTION/ ANIMAL PRODUCTION SYSTEM/ ANIMAL FUNCTION & NUTRITION/ APPLIED FOOD SCIENCE/ RHIZOSPHERE CONTROL/ ECOCHEMICAL ANALYSIS/ MOLECULAR ENVIRONMENTAL MICROBIOLOGY

Division of Agriculture, Frontiers in Environmental Sciences: ORNAMENTAL PLANTS AND LANDSCAPE ARCHITECTURE/ANIMAL ECOLOGY/ SYSTEMATIC ENTOMOLOGY/ SOIL SCIENCE/ SILVICULTURE AND FOREST ECOLOGY/ WOOD CHEMISTRY/ ECOSYSTEM MANAGEMENT/ EARTH SURFACE PROCESSES AND LAND MANAGEMENT/ FOREST POLICY/ LAND AND WATER MANAGEMENT/ ECOLOGICAL AND ENVIRONMENTAL PHYSICS/ SOIL CONSERVATION/ FOREST BIORESOURCE TECHNOLOGY

SCHOLARSHIPS/SUPPORT

SCHOLARSHIPS:

This program will recommend 4 students for both the master's and doctoral course as candidates for MEXT scholarship. The scholarship will be awarded for 2 years for master's and 3 years for doctoral. Apart from this scholarship, other Japanese Government Scholarships such as Embassy Recommendations are also available. For more information, please consult your local Japanese Embassy.

STUDENT SUPPORT:

The staff at both the Graduate School of Agriculture as well as the Office of International Affairs will help you adapt to life in Japanese society, provide opportunities to deepen your intercultural understanding, and facilitate interaction with Japanese students. Things do not always go smoothly, but from the International Student Support Desk to the University's bilingual counseling service, you will always be able to turn to someone for help.

CONTACT US

<https://www.agr.hokudai.ac.jp/spgp/>

✉ kyomu@agr.hokudai.ac.jp
☎ +81- (0)11-706-4119

INTERNATIONAL COURSE IN GRADUATE SCHOOL OF SCIENCE



The International Course in Graduate School of Science offers Master's and PhD level degrees and certificates for foreign students who want to study science at Hokkaido University. The course consists of four majors, Mathematics, Condensed Matter Physics, CosmoSciences, and Natural History Sciences. The major of Natural History Sciences is further classified into three fields: Earth and Planetary Sciences, Biodiversity, and Science Communication. You can undertake all your educational and research activities in English, yet interact closely with Japanese students.

DEAN



NAGAI TAKAYA
PROFESSOR,
GRADUATE SCHOOL OF SCIENCE

Welcome to the International Course in Graduate School of Science. Under the guidance of our expert staff, you will gain new knowledge, find problems to solve, and enjoy using your imagination in scientific endeavors. The course also provides you with interdisciplinary learning opportunities by linking up with the Inter-Graduate School Classes provided by Hokkaido University. I encourage all of you to take advantage of the special resources that we can offer in order to engage in high-quality research and studies for science at Hokkaido University.



ZORIGOO Garid (Mongolia) D3, Department of CosmoSciences, Graduate School of Science

Hokkaido is a nice quiet, uncrowded place which is perfect for an introvert which I tend to be most of the time. Not only that, the climate here is much more preferable for me; it never gets super-hot-humid tropical weather here. Putting these favorable living conditions aside, I feel very fortunate to study at Hokkaido University from my career perspective. My supervisor is not strict. He allows me to work on various projects (which is great for my experience & eventually future job hunt). Furthermore, supports me to work/develop relatively freely on what's in my mind rather than forcing me to work on what's in someone else's mind. I definitely feel that studying here is giving me much broader opportunities in the future and sharpening my skills.

MASTER'S

The usual time required to complete this degree is 2 years.

ADMISSION: April or October

ENTRY REQUIREMENTS:

In order to obtain entry into the Master's Program you must hold a bachelor's degree in any academic area.

DOCTORATE

The usual time required to complete this degree is 3 years.

ADMISSION: April or October

ENTRY REQUIREMENTS:

In order to obtain entry into the Doctoral Program you must hold a master's degree in any academic area.

For detailed information on entry, please check the website:

<https://www2.sci.hokudai.ac.jp/gs/en>

CHOOSE YOUR STUDY FIELD AND RESEARCH GROUP

Mathematics

Algebra / Geometry / Analysis / Applied Mathematics

Condensed Matter Physics

Statistical Physics / Mathematical Physics

Electronic Properties of Solids / J-Material: Physics of Strongly Correlated Systems / Condensed Matter Dynamics / Nanostructure Physics / Electronic Properties of Low-dimensional Materials

Advanced NMR / Condensed Matter Theory / Nanosystem Photonics / Solid State Physics in High Magnetic Field / Muon Spin Resonance / Electron Spin Resonance

CosmoSciences

Observational Astronomy / Theoretical Particle Physics and Cosmology / Theoretical Nuclear Physics / Theoretical Astrophysics / Planetary and Space Group / Astrophysical Chemistry / Ice and Planetary Science / Phase Transition Dynamics / Information Media Science / Nuclear Reaction Data Science / Spacecraft Observation (JAXA)

Natural History Sciences

Meteorology / Physical Oceanography and Climate / Space Geodesy / Seismology

Petrology and Volcanology / Paleobiology / Geochemistry / Earth Materials Science / Earth Biosphere Geoscience / Geotectonics

Seismological Observation / Ocean Bottom Seismology and Tsunami / Volcano Physics / Subsurface Structure

Animal Systematics / Algal and Protist Systematics / Ornithology and Island Biology / Genetic Diversity

Communication of Science and Technology / Philosophy of Science and Technology / Museum Education and Media Studies / Science Education

SCHOLARSHIPS/SUPPORT

Japanese Government Funded:

The Japanese Government provides a scholarship known as the Monbukagakusho: MEXT Scholarship.

This is a scholarship system that the Ministry of Education, Culture, Sports, Science and Technology offers, and is divided into the following three systems:

- (1) Domestic selection (2) University recommendation (3) Embassy recommendation

Private Organization or Local Gov't Funded:

Scholarships from private organizations and local governments are applicable. You can either apply for these through Hokkaido University, or apply individually.

SUPPORT by OIAS:

Office for International Academic Support in the faculty can answer your questions in English and support administrative matters including entrance-examination applications of the graduate school as well as the student life.

CONTACT US

<https://www2.sci.hokudai.ac.jp/office/international/>

✉ international@sci.hokudai.ac.jp
☎ +81-(0)11-706-2916

TRAINING PROGRAM FOR INNOVATORS IN LIFE SCIENCES

- Be a Bridge between Hokkaido and the World -

39

laboratories to
choose from!



MASTER'S

The usual time required to complete this degree is 2 years.

ADMISSION: April or October

ENTRY REQUIREMENTS:

In order to obtain entry into the Master's Course you MUST:

- Consult with a contact professor prior to submitting the application
- Hold a bachelor's degree

DOCTORATE

The usual time required to complete this degree is 3 years.

ADMISSION: April or October

ENTRY REQUIREMENTS:

In order to obtain entry into the Doctoral Course you MUST:

- Consult with a contact professor prior to submitting the application
- Hold a master's degree

For detailed information of this program, please check the website: <https://altair.sci.hokudai.ac.jp/grad/igpoverview/>

COURSE AND LABORATORY

Division of Soft Matter web: <https://life.sci.hokudai.ac.jp/en/sm/lab>

Laboratory of Soft & Wet Matter / Laboratory of Transformational Soft Matter / Laboratory of Molecular Device / Laboratory of Soft Matter Structure & Physics / Biological Information Analysis Science / Laboratory of Protein Science / Laboratory of Cell Dynamics / Laboratory of Physical Ethology / Laboratory of Pathology / Laboratory of Reconstructive Surgery and Rehabilitation Medicine / Laboratory of Functional Soft Matter (Inter-Field Cooperation with National Institute for Material Science; NIMS)

Division of Life Science~Transdisciplinary Life Science Course web: <https://life.sci.hokudai.ac.jp/en/tl/lab>

Laboratory of Structural & Biological Chemistry / Laboratory of Cellular Machinery Science / Laboratory of Mathematical Biology / Laboratory of Molecular Chemical Biology / Laboratory of Smart Molecule / Laboratory of Innate Immunity / Laboratory of Molecular Cell Dynamics / Laboratory of Advanced Chemical Biology / Laboratory of Embryonic and Genetic Engineering / Laboratory of Biomolecular Adaptation Science (Inter-field Cooperation with AIST) / Laboratory of Frontier Biomaterials Science (Inter-Field Cooperation with National Institute for Material Science; NIMS)

Division of Life Science~Biosystems Science Course web: <http://www.lfsci.hokudai.ac.jp/bs/en/lab/>

Laboratory of Molecular Interaction / Laboratory of Plant Morphology and Gene Function / Laboratory of Plant Evolutional and Developmental Biology / Laboratory of Environmental Molecular Bioscience / Laboratory of Cell function and Structure III / Laboratory of Cell Structure and Function II (Sato & Takagi Lab) / Laboratory of Cell Structure and Function (Chiba Lab) / Laboratory of System Neurobiology / Laboratory of Behavior and Neurobiology / Laboratory of Behavior and Neurobiology (Soma Lab) / Laboratory of Molecular Neuroethology / Laboratory of Neurobiology (Tanaka, Nishino & Schleyer Lab) / Laboratory of Reproductive and Developmental Biology (Ogiwara Lab) / Laboratory of Reproductive and Developmental Biology (Katsu Lab) / Laboratory of Reproductive and Developmental Biology (Kuroiwa, Yoshida & Mizushima Lab) / Laboratory of Reproductive and Developmental Biology (Kimura Lab) / Laboratory of Reproductive and Developmental Biology (Kotani Lab) / Laboratory of Animal Genetics

In these highly esteemed degree programs, students focus on advanced research areas in the field of Life Science with renowned academics at the forefront of their professions. Our courses have a creative curriculum where students encounter a variety of teaching staff coming from a wide range of research backgrounds in the field of life sciences. Recently in Life Sciences, convergence of different fields of science is advancing in the existing interdisciplinary field. Responding to these emerging trends, our teaching staff cover a wide range of research areas from basic biology through chemistry, physics, mathematics, medicine, and pharmacy. Based on the purpose of building up a world renowned research center for life sciences, this program is designed for both international students who wish to major in life sciences and have a wide research background, and Japanese students with a global perspective, who are eager to study in an international environment.

WELCOME MESSAGE



FIND OUT
WHAT
STUDENTS
THINK

ABU BIN IHSAN (Bangladesh) Training Program for Global Leaders in Life Sciences, 3rd year doctoral student, Graduate School of Life Science

I feel really fortunate to get the opportunity to study in the Life Science Course at Hokkaido University, one of the top ranking universities in Japan. Hokkaido is a great place to live and study where you can learn about nature from the viewpoint of material sciences based on physics and chemistry. I feel really privileged to experience pioneering research activity in the life sciences for bio-medical application. This is certainly a university with high level research with a congenial working environment where you can utilize state of the art modern technologies to research demanding topics. I have lots more things I want to do here - HU makes me want to try my best and enjoy everything. I want to use my knowledge and experience for the sake of humanity and work in science to search for creative ideas and solutions. My dream is to create something that will amaze the world!!!



JIAN PING GONG
PROFESSOR,
GRADUATE SCHOOL OF LIFE SCIENCE

Welcome to the "Training Program for Global Innovators in Life Sciences." This program aims to build and train world-class leaders in life sciences that can work at companies and institutes throughout the world. In this course, students are encouraged to plan and carry out international meetings to improve their ability to use English as an international communication tool, and also attend international conferences to develop presentation skills.

We also require students to make proposals for competitive research funds and to submit papers to international journals. This enables them to have practical experience and be at the forefront of their research activities.

We welcome you to apply to this amazing program and look forward to seeing you on campus.

SCHOLARSHIPS/SUPPORT

Since each scholarship has different application procedures and eligibility requirements, please contact a prospective supervisor in advance of application.

JAPANESE GOVERNMENT (MEXT) SCHOLARSHIP:

University recommendations (IGP special quota, 8 students who enroll in October only) / university recommendations (general quota) / embassy recommendations are available.

SCHOLARSHIPS FOR SELF SUPPORTED STUDENTS:

Reservation Program for Monbukagakusho Honors Scholarship for Privately Financed International Students by Pre-arrival Admission: a few students for master's and doctoral students for 6 months or 12 months.

TRAVEL SUPPORT:

Faculty of Advanced Life Science supports program students who go abroad for internships or conferences/workshop to attend or make a presentation.

STUDENT SUPPORT:

Staff at laboratories, IGP office, and Graduate School of Life Science will be here to help you. Information from IGP is both in Japanese and English.

CONTACT US

<https://altair.sci.hokudai.ac.jp/grad/igpoverview/>

✉ igp@sci.hokudai.ac.jp
☎ +81- (0)11-706-2747

INTERNATIONAL PROGRAM OF PhD DEGREE ADVANCED GRADUATE SCHOOL OF CHEMISTRY AND MATERIALS SCIENCE

50

laboratories to choose from!



APPLICATION DETAILS AND ENTRY REQUIREMENTS

APPLICATION DETAILS:

Application Period - April and October each year

Selection Method:

1. First screening <document screening>
2. Second screening <oral screening>
The oral screening (interview) will be held via Zoom/Skype, etc. meaning you can undertake the entire application procedure without coming to Hokkaido University.

Forms required in the application pack:

1. Application Form
2. Two Recommendation Letters
3. Summary of your master's thesis or an abstract of your research achievements
4. List of publications and copies of key research papers (if any)
5. An academic transcript from both undergraduate and graduate schools
6. Official certificates of degrees (both bachelor's degree and master's degree.)
7. A certificate for English qualification
8. Passport copy
9. Any other documents stipulated by the accepting professor

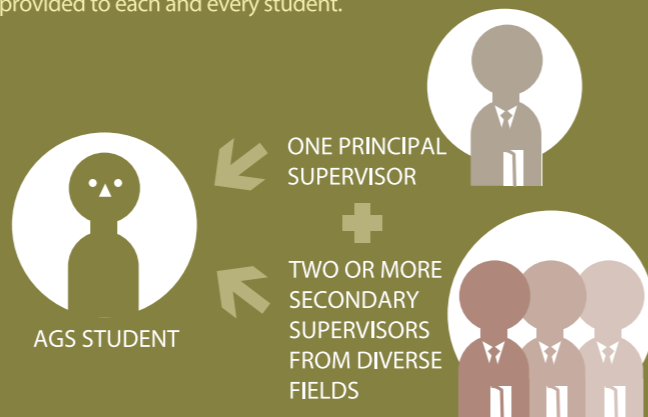
ENTRY REQUIREMENTS:

In order to obtain entry into the Doctoral Course you MUST:

- have strong academic records at both undergraduate and graduate levels
- have been awarded or expect to be awarded a master's degree at least 1 month prior to commencement or expect to be evaluated by us as possessing equivalent academic skill

EDUCATIONAL SUPPORT

A unique aspect of this course is the amount of support provided to each student. Faculty members from both the science and engineering fields act as secondary supervisors, ensuring a well-rounded education is provided to each and every student.



For detailed information on entry and application requirements, please see the website at <https://www.cse.hokudai.ac.jp/en/ags/>

Chemistry is playing a major role in innovations of materials science addressing both academic and social issues that traverse and encompass the main fields of science and technology. To achieve the innovations that are demanded by the 21st century society in future materials, energy, medicine, welfare, and so on, education of talented young students in chemistry is paramount. The international educational program "Advanced Graduate School of Chemistry and Materials Science (AGS)" of the Graduate School of Chemical Sciences and Engineering, enrolls a limited number of elite students each year. The AGS program includes all major fields in chemistry and materials science, including recent advances in organic chemistry, physical chemistry, inorganic chemistry, organometallic chemistry, polymer chemistry, catalysis, materials chemistry, biochemistry, and chemical engineering.

COURSE CONVENOR



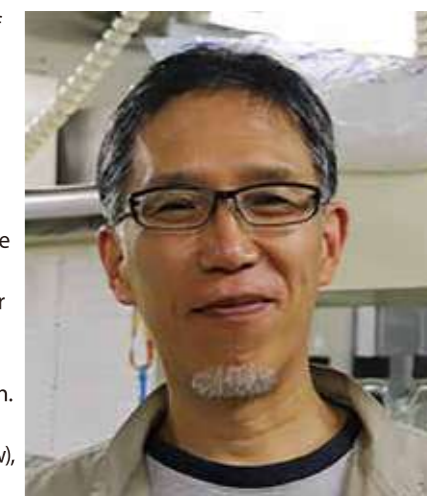
FIND OUT
WHAT
STUDENTS
THINK

BASTIAN BJERKEM SKJELSTAD (Norway) AGS, Doctoral graduate, Graduate School of Chemical Sciences and Engineering

The Advanced Graduate School of Chemistry and Materials Science (AGS) has provided me a great opportunity to pursue a doctoral degree in theoretical chemistry. The professors are world-leading in their respective research areas, and offer an excellent learning environment that helps shape the students as the next generation of scientists.

As students, we are provided the necessary facilities to undertake our research and offered a generous scholarship that enables us to focus fully on our scientific activities. Due to the scholarship, I am able to lead a comfortable life and put all my efforts into research, without worrying about my financial situation.

I would highly recommend applying to AGS if you are ambitious and enthusiastic about chemical research, and would like to learn from leading scientists under outstanding conditions. Coming as an international student also enables you to acquire an improved understanding of other cultures and globalization, which has become key in modern international research.



MURAKAMI YOTA

PROFESSOR,
GRADUATE SCHOOL OF
CHEMICAL SCIENCES AND ENGINEERING

In our program, students are educated by a total of 130 researchers from a vast range of research fields including quantum chemistry, organic chemistry, catalytic chemistry, materials chemistry, biological chemistry and many more. We are a very unique graduate school in that we specialize in chemistry. This program was started to foster chemistry researchers who can take active roles globally in the future.

Each year we recruit talented students from all over the world and foster them as independent researchers, providing a solid education in chemistry in an atmosphere of friendly competition. Financial support is also provided, as is the opportunity to partake in Summer School (see below), travel to international conferences, and join international internship programs. The course enrolls a mix of Japanese and international students giving it a truly international flavor! We welcome you to apply.

SUMMER SCHOOL Each year we hold a 'Summer School' which is organized by students. Over the course of this event, all students present their research in English and lectures are delivered by invited researchers not only from Japan but from all over the world. Recreational activities are also a big part of the event. This is a very rewarding event which allows intercultural exchange between Japanese students and international students over two days.

SCHOLARSHIPS/SUPPORT

Selected students will be provided with financial support in the form of a scholarship which covers the examination fee, entrance fee, tuitions fees, and living costs. For more information, please visit the website.

*Waivers will not be available to all students.

CONTACT US

<https://www.cse.hokudai.ac.jp/en/ags/>

✉ ags@eng.hokudai.ac.jp
☎ +81- (0)11-706-8110

SPECIAL TRAINING PROGRAM FOR FOSTERING LEADING RESEARCHERS TO DEVELOP GLOBAL BIORESOURCE PLATFORM

65

credits offered in English!

ADMISSION AND COMPLETION REQUIREMENTS

ADMISSION REQUIREMENTS:

- In order to obtain entry into the doctoral program you MUST:
- be a non-Japanese citizen residing outside of Japan
 - be not more than 35 years of age on April 1 of the previous year you wish to apply to be eligible for the MEXT scholarship.
 - be one of the below:
 - (1) Graduate of a School of Veterinary Medicine with a five-year or more course
 - (2) Graduate of a School of Medicine, Dentistry or Pharmaceutical Sciences with a five-year or more course
 - (3) Graduate of a Graduate School Master's course (Obtaining Master's degree is generally required)
- * Applicants who fall into the above conditions of requirements (1)~(3) must complete eighteen years of formal education in principle. If you are unable to fulfill the above mentioned criteria, you must have the evaluation for your ability and knowledge by the graduate school prior to submission of application
- be certified as both physically and mentally fit by a qualified and recognized physician with documented certification
 - be fluent in English

COMPLETION REQUIREMENTS:

- In order to obtain this degree you MUST:
- Complete 38 credits: 23 in the required bracket and 15 in the elective bracket of Graduate School of Veterinary Medicine
 - Complete 38 credits: 18 in the required bracket and, 10 in the required elective bracket 10 in the elective bracket of Graduate School of Infectious Diseases
 - Complete a thesis based on your own research results conducted during the course and submit this thesis to multiple examiners (1 principal and 3 or more adjunct referees)
 - Complete your thesis within 4 years
- Submission of a doctoral thesis is allowed only after you have published 2 scientific papers as a first author in peer-reviewed international scientific journals within defined fields of interests.

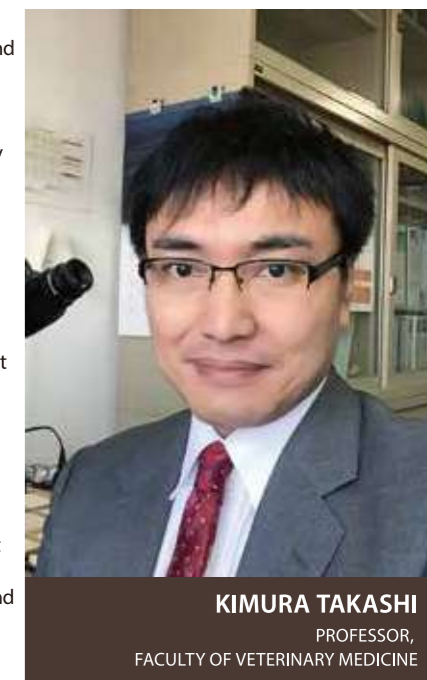
DEPARTMENTS AND LABORATORIES

- **Graduate School of Veterinary Medicine**
 - Department of Basic Veterinary Sciences:** Laboratory of Anatomy / Laboratory of Physiology / Laboratory of Biochemistry / Laboratory of Pharmacology
 - Department of Applied Veterinary Sciences:** Laboratory of Radiation Biology / Laboratory of Animal Science and Medicine
 - Department of Environmental Veterinary Sciences:** Laboratory of Toxicology / Laboratory of Wildlife Biology and Medicine
 - Department of Clinical Sciences:** Laboratory of Veterinary Internal Medicine / Laboratory of Veterinary Surgery / Laboratory of Comparative Pathology / Laboratory of Theriogenology / Laboratory of Molecular Medicine / Laboratory of Advanced Veterinary Medicine
- **Graduate School of Infectious Diseases**
 - Department of Disease Control:** Laboratory of Microbiology / Laboratory of Infectious Diseases / Laboratory of Parasitology
 - Department of Preventive Veterinary Medicine:** Laboratory of Public Health / Laboratory of Veterinary Hygiene
 - Research Center for Zoonosis Control:** Division of Global Epidemiology / Division of Molecular Pathobiology / Division of Bioresources / Division of Collaboration and Education / Division of Bioinformatics / Division of Infection and Immunity / Unit of Risk Analysis and Management / Laboratory for Biologics Development / Laboratory of Pathogen Structure
 - Faculty of Medicine:** Laboratory of Microbiology and Infectious Diseases

On this program, Hokkaido University's Graduate School of Veterinary Medicine and Graduate School of Infectious Diseases (established in April 2017) offer a curriculum encompassing two expert training courses (i.e., the Special Course for Zoonosis Control Experts and the Special Course for Chemical Hazard Control Experts) in their areas of excellence. The aim is to nurture researchers in veterinary science with broad outlooks and extensive knowledge and skills both in their own fields of expertise and elsewhere. Leveraging the global networks developed by the faculties of the two schools, the program is also designed to foster the development of international research leaders capable of contributing to the One Health initiative by helping students gain practical experience outside Japan via overseas field studies, internships, joint research with overseas institutions and other programs.

COURSE CONVENOR

Welcome to our unique program! Our faculty and graduate schools jointly conduct educational programs and research projects with foreign universities, and we are engaged in a diverse range of outreach activities in the utilization of our knowledge in veterinary science. We reorganized the former Graduate School of Veterinary Medicine into the new Graduate School of Veterinary Medicine and the Graduate School of Infectious Diseases in academic 2017 to provide even more advanced and deepened education. With an interdisciplinary and international education/research environment using a collaborative research network that connects more than 30 countries around the world, the Graduate School of Infectious Diseases provides graduate education aimed at producing experts who can combat infectious diseases. Education and research supervision are provided by researchers of the academic staff of the International Institute for Zoonosis Control who are specialized in veterinary medicine, medicine, pharmaceutical science, natural science and information science, as well as teaching staff of infectious disease-related laboratories at the Faculty of Veterinary Medicine and the Faculty of Medicine. The Graduate School of Veterinary Medicine and the Graduate School of Infectious Diseases welcome students who have the motivation and enthusiasm to learn and overcome global issues related to the health of humans, animals and the environment.



KIMURA TAKASHI
PROFESSOR,
FACULTY OF VETERINARY MEDICINE



FIND OUT WHAT STUDENTS THINK

KIEN TRUNG LE (Vietnam) 4th year doctoral student, Graduate School of Infectious Diseases

The Special Training Program provides me an invaluable opportunity to promote my scientific competence. In Vietnam where I am from, there have been several issues of animal health (e.g. avian influenza, foot and mouth disease, antimicrobial resistance) that I always desire to address. Fortunately, I found that the Special Training Program best suits for my desire because I can connect my field experience with scientific base for solving these current issues. The program creates an international and interdisciplinary environment in which I am able to interact with experts, colleagues from various fields and different countries. Remarkably, the program provides a unique policy for promoting international collaboration through Financial Support of internship abroad, practical field study and conferences to acquire real-world experiences and career paths in an international context. Not only does the scientific life fascinate me, but the unique Japanese culture also captures my interest. These features have led to my decision to pursue doctoral study in Japan for 4 years. I would strongly recommend this program especially to young researchers who would like to make a development in their countries and be the next Global Leaders in Veterinary Science.

* "Special Training Program for Fostering Leading Researchers to Develop Global Bioresource Platform" will be offered until March 2023.

SCHOLARSHIPS/SUPPORT

JAPANESE GOVERNMENT (MEXT) SCHOLARSHIP:

This Program will recommend students to MEXT for this doctoral course as candidates for this scholarship. A monthly allowance of ¥145,000 for 4 years is available with no extension possible (calculation based on 2022 rates.) Apart from this scholarship, other Japanese Government Scholarships such as Embassy recommendations are also available. For more details about this scholarship, please consult your local Japanese Embassy.

THE WORLD LEADING INNOVATIVE AND SMART EDUCATION (WISE) PROGRAM SCHOLARSHIP:

This program will recommend students to WISE for this doctoral course as candidates for this scholarship. A monthly allowance of ¥150,000 for 2 years will be awarded from April 2023 to March 2025. (calculation based on 2022 rates.)

CONTACT US

<https://www.vetmed.hokudai.ac.jp/en/about/pgp/>

✉ kyomu@vetmed.hokudai.ac.jp
☎ +81- (0)11-706-5175

1. COURSE IN GLOBAL ENVIRONMENTAL MANAGEMENT (GEM)

2. ENGLISH PROGRAM OF ENVIRONMENTAL EARTH SCIENCE FOR SUSTAINABLE SOCIETY (EPEES)



Our 'Course in Global Environmental Management' (GEM) is taught entirely in English and aims to foster professionals who can genuinely contribute to solving the world's environmental problems. Bringing both international students as well as Japanese students together, the course covers a large range of fields such as resource management, environmental education, and human capacity building. The course by nature is very flexible in the sense students are welcome to enter the degree program and subsequently decide their specialty and supervisor after enrolment.

Offered from April 2014, our 'English Program of Environmental Earth Science for Sustainable Society' (EPEES) is a course in which students can choose from an extremely comprehensive list of study areas and any faculty member from our graduate school can act as a supervisor. The course targets international students from any background, region and study field. Students must show a genuine interest in environmental issues.

COURSE CONVENOR

Welcome our master's and doctoral programs in the Faculty of Environmental Science. Our objective is to offer research, education, and comprehensive practical training to foster a new type of professional who can lead the world in their respective fields and improve our environment and society. We admit students with strong academic backgrounds in any study fields who are interested in the global environment and who show strong determination to solve environmental problems. If you wish to study with us solely in English, we strongly recommend either of these two programs of which you can take at either master's or doctorate level. We encourage you to apply to our high caliber courses that will challenge you to think about our natural environment in new and innovative ways. We look forward to seeing you at Hokkaido University.



OKINO TATSUFUMI
PROFESSOR,
GRADUATE SCHOOL OF ENVIRONMENTAL SCIENCE



**FIND OUT
WHAT
STUDENTS
THINK**

SHRUTI GANBOTE (India) a master's course student, Graduate School of Environmental Science

The GEM course which is conducted in English covers a number of environmental issues. It also brings Japanese students and international students together by having various discussions. There is proactive learning with the involvement of lectures, seminars, field works, and short/intensive programs that are conducted in other universities that will help us to improve our experience and knowledge and at the same time interact with students of different universities. Having presentations in the GEM seminar every semester gives us a gist of other's research and comments from professors and students help to improvise and build confidence in public speaking. Moreover, professors from different specialties help students achieve their research goals. I am glad to have chosen this course having a highly expert staff and an intercultural environment with a focus on solving international environmental problems.

MASTER'S

DOCTORATE

ENTRY REQUIREMENTS: To obtain entry into the Master's Course, applicants must hold a bachelor's degree in any field.

ENTRY REQUIREMENTS: To obtain entry into the doctoral course, applicants must hold a master's degree in any field.

Please see the website for detailed information <https://www.ees.hokudai.ac.jp/?lang=en>

CURRICULUM

1) Core Subjects

Fundamental Course in Environmental Science (2 credits) / Introduction to Environmental Science (2 credits) / Introduction to Global Environmental Management (2 credits)

2) Special Subjects

Fundamental Course in Atmosphere-Ocean Physics (2 credits) / Fundamental Course in Biological Diversity (2 credits) / Fundamental Course in Molecular Biology (2 credits) / Fundamental Course in Materials Science I, II, III (2 credits each) / Fundamental Course in Environmental Science Research (1 credit) / Introduction to Natural Environmental Studies (2 credits) / Introduction to Environmental Analysis (2 credits) / Advanced Course in Environmental Pollution Comparison (2 credits) / Advanced Course in Geoecological Resources (2 credits) / Advanced Course in Climate Change Impacts (2 credits) / Advanced Course in Hydrological Cycle (2 credits) / Advanced Course in Environmental Geoinformatics (2 credits) / Advanced Course in Water Resources (2 credits) / Advanced Course in Watershed Environmental Science (2 credits) / Advanced Course in Environmental Conservation (2 credits) / Advanced Course in Environmental Adaptation (2 credits) / Advanced Course of International Science Communication Methods (2 credits) / Advanced Course in Academic English Writing for Environmental Sciences (2 credits) / Advanced Course in Paleoclimatology and Biomarker Geochemistry (2 credits) / Advanced Course in Tropospheric Chemistry (2 credits) / Advanced Course in Terrestrial Geochemical Cycle (2 credits) / Advanced Course in Ocean Biogeochemistry (2 credits) / Advanced Course in Environmental Analytical Chemistry (2 credits) / Advanced Course in Theoretical Glaciology (2 credits) / Advanced Course in Molecular Photonics and Electronics Science I (2 credits) / Advanced Course in Environmental Catalytic Chemistry II (2 credits)

3) Work and Seminars

Laboratory Work in Environmental Analysis (4 credits) / Laboratory Work in Environmental Materials Science (4 credits) / International Laboratory Works for Biogeoscience (4 credits) / Study on Fostering Leaders for Environmental Conservation (4 credits) / GEM Course Seminar

4) Special Study and Reading

Research in Environmental Science I / Research in Environmental Science II / Seminar in Environmental Science I Development / Seminar in Environmental Science II Development

SCHOLARSHIPS/SUPPORT

SCHOLARSHIPS:

Since each scholarship has different application procedures and eligibility, please contact a prospective supervisor well in advance of your application.

Hokkaido University DX Doctoral Fellowship [Reference] <https://sites.google.com/eis.hokudai.ac.jp/dxphd-fellow/home>

Scholarships through the Graduate School of Environmental Science: Monbukagakusho Honors Scholarship for Privately Financed International Students (Monthly stipend of ¥48,000 for 6 or 12 months after arriving in Japan) *Can be issued with the Hokkaido University English Program Support Grant.

Japanese Government Scholarship (University recommendation) [Reference] Ministry of Education, Culture, Sports, Science & Technology in Japan (MEXT) <http://www.mext.go.jp/english/>

Scholarships which you can apply in your country [Japanese government scholarship (Embassy recommendation)] you can apply through your home embassy. The deadlines and methods of application differs in each country. Please consult your local Japanese embassy.

STUDENT SUPPORT:

The staff at both the Graduate School of Environmental Science as well as the Student Exchange Division will help you adapt to life in Japanese society, provide opportunities to deepen your intercultural understanding, and facilitate interaction with Japanese students. Things may not always go smoothly, but the International Student Support Desk and university's bilingual counseling service is always there to help you.

CONTACT US

<https://www.ees.hokudai.ac.jp/?lang=en>

✉ kyomu@ees.hokudai.ac.jp
☎ +81- (0)11-706-2204



HOKKAIDO
UNIVERSITY

CONTACT

HOKKAIDO UNIVERSITY Admission Center

Kita17, Nishi 8, Kita-ku, Sapporo, 060-0817

<https://www.global.hokudai.ac.jp/siteinfo/contact-us>

 HokkaidoUni  hokkaidouni  @HokkaidoUni  Hokkaido Uni

