



Australian
National
University

College of Asia and the Pacific (CAP)
Bachelor of Asia-Pacific Affairs

R RITSUMEIKAN
UNIVERSITY

College of Global Liberal Arts (GLA)
Bachelor of Global Liberal Arts

Department		College of Global Liberal Arts
Degree		RU : Bachelor of Global Liberal Arts ANU : Bachelor of Asia-Pacific Affairs
Enrollment Period		April / September
Location	April Enrollment	Semester 1, 2, 3, 6, 7, 8 : RU, Osaka Ibaraki Campus Semester 4, 5 : ANU, Acton Campus (Canberra, Australia)
	September Enrollment	Semester 1, 2, 3, 4, 7, 8 : RU, Osaka Ibaraki Campus Semester 5, 6 : ANU, Acton Campus (Canberra, Australia)
Duration		4 Years
Annual Student Intake		100 The intake includes 10 students enrolling into ANU

Information

GLA Website
en.ritsumei.ac.jp/gla



RU International
Admissions Website
Latest information on
Admissions and Events
en.ritsumei.ac.jp/e-ug/



 **YouTube**
Ritsumeikan University
International Admissions



CONTACT

College of Global Liberal Arts, Ritsumeikan University

2-150 Iwakura-cho, Ibaraki-shi, Osaka 567-8570 JAPAN / Email: glapost@st.ritsumei.ac.jp / Tel: +81 72 665 2492

• Publication Version [June, 2024] The content of this booklet is accurate at the time of publication. Please check the GLA website for updates.
• The information in this booklet is for students applying to enter the College of Global Liberal Arts, Ritsumeikan University.

Study in Japan and Australia

College of Global Liberal Arts



Australian
National
University

R RITSUMEIKAN
UNIVERSITY

2025

That's why GLA

A multi-faceted education in a multi-cultural background

Isobel Florice Maretza Fincher
Fourth-year Student
Attended West Buckland School, U.K.

Why I chose GLA

When looking at universities, I really struggled to find one that I thought would cover all my interests. In my home country of the U.K., it was difficult to find a course that allowed for a varied programme featuring mostly humanity-based subjects, but with options such as psychology and Japanese. Unusually, GLA offered a course that allows for a multi-faceted education in a multi-cultural background in Japan, a country that I have come to love. The location is also excellent, as the Osaka Ibaraki Campus offers a peaceful environment that is nevertheless conveniently located halfway between Kyoto and Osaka rail stations. One big concern for international students is finance, but Ritsumeikan and GLA both offer very generous scholarship opportunities. Those are the reasons why I decided to apply to GLA and I was very happy when I got the acceptance letter!

The best things about studying at GLA

The relationship between the students and the professors is the most appealing aspect of learning at GLA. As the teaching staff and the student body are both small, you get to know the lecturers a lot better and receive more direct feedback on assignments and essays. Despite the small size of the student body, GLA is an incredibly diverse community, filled with individuals both accommodating and accepting, no matter an individual's background. Building meaningful connections between students feels effortless as those within GLA supports an individual's journey.

Message to prospective students

Don't worry if you arrive at university not knowing what you want to do or who you need to be: There is often pressure to decide your career path immediately after high school, but you will likely finish university with a completely new career in mind. Moving away from home is also a challenge, but the experience is definitely worth sacrificing familiarity for. I look forward to finally meeting you all on campus!

GLA — the perfect place to explore your options

Seojin Park
Fourth-year Student
Attended Michuhol Foreign Language High School, Korea

Why I chose GLA

During my time in high school, I realized I wanted to explore the world more and study beyond what was typically expected of a Korean student, but it was difficult to find a university that satisfied me. GLA turned out to be the only college that fulfilled my criteria. Firstly, GLA is one of the very few places in Japan that offers a dual degree program. Secondly, it provides a rare opportunity to study at ANU, which is one of the most prestigious universities in the world. As my field of interest is international relations, being able to study at both Ritsumeikan and ANU was a huge merit for me. Thirdly, the internationality within GLA provides a unique space for not only domestic students, but also us international students. Fourthly, the GLA curriculum offers a wide variety of courses, from history and politics to business, design, and computer programming. That means you are free to pursue your own interests and goals by selecting from the great variety of subjects within the GLA curriculum. In short, GLA provides an experience that is not available at any other university in Japan.

The best things about studying at GLA

Thanks to the variety of courses and excellent teaching staff of both Ritsumeikan and ANU, you will be able to learn a great deal and enhance your skill set. You will also be able to broaden your perspective as you study with staff and students from many different international backgrounds. What is really good about studying at GLA is that you get to study in small-sized classes. That means you can ask more questions and participate more actively in the class. Moreover, GLA adopts a one-lecture, one-tutorial system for all courses, which really supports two-way communication with teachers and classmates. GLA is the perfect place for students who seek more than just a series of lectures.

Message to prospective students

A university is about exploring what you want to do in the future and GLA is the perfect place to discover your options if you do not have a clear career path. As long as you put in the effort, you will reap a reward in the end. The GLA community is waiting to welcome you, so I wish you all the best of luck!



History
120+
Years

Ritsumeikan University

Ritsumeikan University is a leading comprehensive private university in west Japan with over 120 years of history. It was selected to lead the globalization of Japanese higher education as part of the "Top Global University Project" funded by the Japanese government. Today, around 36,000 students are studying and conducting research on its four campuses in Kyoto, Shiga, and Osaka. Ritsumeikan University is pioneering new programs utilizing Japan's well-developed education with their English-medium Bachelor Programs.



College of Global Liberal Arts

The College of Global Liberal Arts (GLA) was inaugurated in April 2019 at the Osaka Ibaraki Campus. Under the partnership with the College of Asia and the Pacific at the prestigious Australian National University (ANU), all GLA students pursue a four-year dual degree program leading to degree qualifications from both Ritsumeikan and ANU. The Ritsumeikan component provides thorough training in the liberal arts based on small-group discussion and is aimed at promoting social progress through the application of wide-ranging knowledge of the arts and sciences. GLA provides a great deal of global career support to students from a diverse range of international backgrounds.



The Australian National University

Founded in 1946, ANU is Australia's national university and is a research-centered institution focused on finding solutions to global problems. Occupying a high position in a range of university ranking systems, it is equally renowned for its outstanding alumni, who include Australian prime ministers and Nobel Prize winners. The university's campus is centrally located in the Australian capital city of Canberra, and enjoys a parkland setting of great natural beauty where approximately 4,500 overseas students (as of 2023) pursue research activity.



College of Asia and the Pacific

GLA's partner, the College of Asia and the Pacific, has one of the world's largest concentrations of English-speaking researchers specializing in the Asia-Pacific region. It plays an important role not only as a source of expertise on Australia's domestic public policy, but also as a knowledge base for the societies, cultures, and economies of the Asia-Pacific region. Meanwhile, the Coral Bell School of Asia Pacific Affairs (Bell School for short), in which students from GLA are enrolled, is a world-leader in Asia-Pacific and international politics, society, strategy, security, and diplomacy.



Australia's
Leading
University

#10
in the World
for Politics

*QS World University Rankings
2023

#34
in the World

*QS World University Rankings
2024

2700+
International
Students

Global
Network

463 Universities
and Institutions
in 68 Countries
and Regions

Define yourself and make a difference to the world

KEY FEATURES

Dual degree program with ANU

Through the four-year program, students will graduate with a Bachelor of Global Liberal Arts from RU and a Bachelor of Asia-Pacific Affairs from ANU upon completion of the requirements and credits of both universities. In Japan, students study liberal arts with a focus on becoming a proactive member of the global society in the twenty-first century. In Australia, students experience the dynamism of globalization firsthand and deepen their studies of the Asia-Pacific region.

World-class education that supports carving out future careers

Students receive a world-class education, learn from some of the best academics in the Asia-Pacific region, and graduate with two bachelor's degrees from leading universities in Australia and Japan. The exciting learning experience in both environments expands students' possibilities and helps them carve out future careers.

3 Years at RU in Japan + 1 Year at ANU in Australia

In this 4-year program, students spend 3 years in total at RU in Osaka and 1 year at ANU in Canberra. They learn from ANU faculty members based at RU's Osaka Ibaraki Campus (OIC) before and after they travel to Australia to study. Upon their return to Japan, students continue taking ANU courses to complete their studies of Global Liberal Arts and Asia-Pacific Affairs.

	Year 1		Year 2		Year 3		Year 4	
April Enrollment	Spring 1	Fall 2	Spring 3	Fall 4	Spring 5	Fall 6	Spring 7	Fall 8
	RU Courses		RU+ANU Courses	ANU Courses		RU+ANU Courses		
September Enrollment	Fall 1	Spring 2	Fall 3	Spring 4	Fall 5	Spring 6	Fall 7	Spring 8
	RU Courses		RU+ANU Courses		ANU Courses		RU+ANU Courses	

Liberal Arts education to nurture global citizens

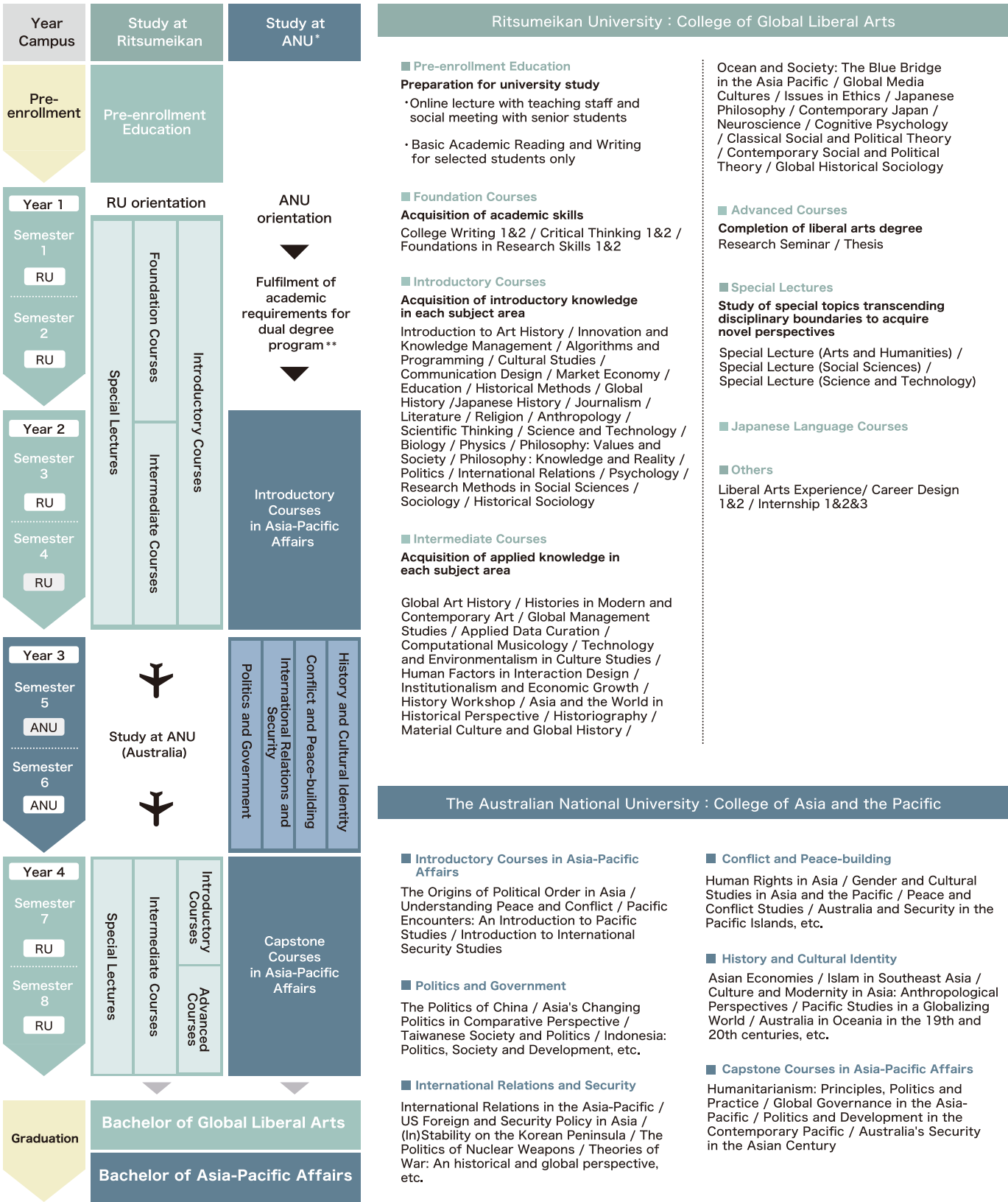
GLA provides students with a flexible yet rigorous interdisciplinary education through systematic exposure to fundamental knowledge from diverse disciplines. Upon successful completion of the program, students will be trained to apply their acquired knowledge for social development and problem solving.

Philosophy	History	Political Science	International Relations	Information Science and Engineering	Business Management
Economics	Sociology	Cultural Studies	Design	Psychology	Sustainable Society

CURRICULUM

College of Global Liberal Arts study flowchart (September enrollees)

* For more information, check the ANU website

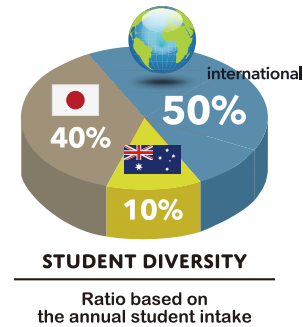


** To be eligible to take the Australian National University (ANU) courses, students must meet standards for academic ability. For more detail, please check the GLA website.

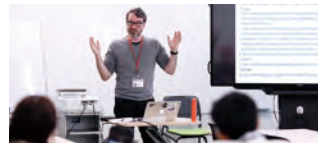
Learning at GLA

Truly international learning environment

GLA has 100 students per year, about 60% of whom are international students from around the world. 90 students start studying at RU and the remaining 10 at ANU. Outside of the classroom, both domestic and international students live in an on-campus dormitory. This international learning environment helps students develop cross-cultural communication skills.



All courses in small and interactive group



GLA courses take place through an active learning approach based on small groups of no more than 25. The program consists of a combination of lectures emphasizing communication with professors and tutorials centered on discussion and group work with other students from diverse international backgrounds.

Academic advising support for all students

GLA is committed to providing academic support to every student. We help students navigate the GLA curriculum and make sure students remain on track for graduation, all through individual guidance.



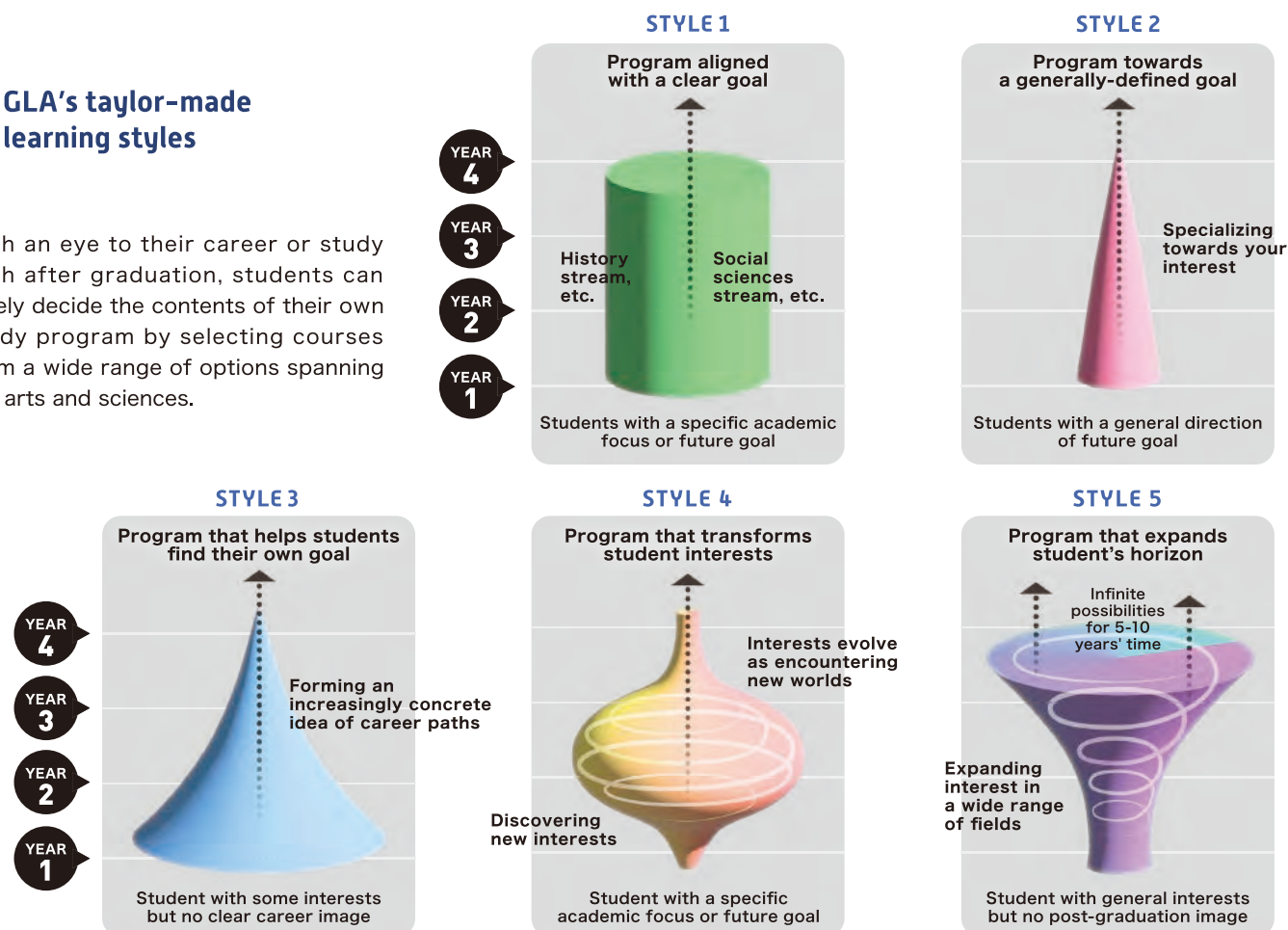
A wide range of advisors to help students



- Pre-Enrollment Navigators: To help you prepare for enrollment
- Academic Advisors: To advise you on study planning
- Writing Coaches: To help you acquire academic writing skills

GLA's tailor-made learning styles

With an eye to their career or study path after graduation, students can freely decide the contents of their own study program by selecting courses from a wide range of options spanning the arts and sciences.



Career

GLA's distinctive system of career support

To support each individual GLA student to realize their future ambition, GLA works in coordination with the Ritsumeikan Career Center to provide optimal individual career support throughout the four years. Specifically, our support includes Career Design1, where first-year students consider their future life plan in relation to their studies at GLA over the coming four years, internships in which students gain experience of working life, and individual support through Ritsumeikan Career Center where students clarify their post-graduation career or study path in light of their studies at ANU and other experiences. These are designed to stimulate individual career awareness in a progressive and continuous manner.

GLA's independently developed system of career planning support



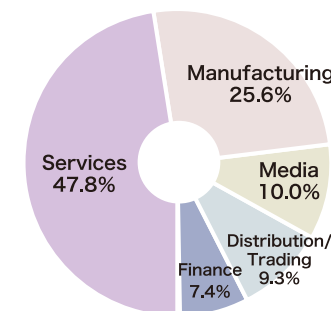
Launch your own global career

GLA graduates are employed by global companies in Japan and overseas (IT businesses, trading companies, advertising agencies, consultancies, etc.), or continue studying at top-ranking graduate schools such as those in the Australian National University and in the USA. Further deepening their specialisms at graduate school will throw open the path to global careers in government agencies, international organizations, NGOs, and other activities at the international level.

Graduates Career Outcomes

Graduate Schools Enrollment
15.5%

- Calculated based on the results of graduates of the 2022 and 2023 academic years.
- The percentage may not be 100% due to fractions.



Employers hiring graduates

Accenture Inc. AlphaSights Ltd. Amazon Japan G.K. Dentsu Inc. Digital Arts Inc. Itochu Corporation Japan Material Co., Ltd. Kubota Corporation Mercedes-Benz Japan Co., Ltd. Nagase & Co., Ltd. Nippon Express Co., Ltd. Nippon Yusen Kabushiki Kaisha (NYK Line) Okasan Securities Co., Ltd. ORIX Corporation Progrit Co., Ltd. Robert Walters Japan K.K. Shanghai Commercial Bank Ltd. Singapore Airlines Ltd. SoftBank Corp. Swissport Japan K.K. Terumo Corporation Tokai Tokyo Financial Holdings, Inc.

Graduate Schools

The Australian National University Georgetown University Seoul National University



The Value of the Dual Degree Program – Understanding where we live

Kim Kunhee

B.A. in Global Liberal Arts, Ritsumeikan University, and B.A. in Asia-Pacific Affairs, the Australian National University, 2023

Throughout the dual degree program, I was able to get a thorough understanding of the Indo-Pacific. Being aware of what is happening in the region cannot be done only by looking into political relations, but also requires understanding economic flows, technological developments, and cultural exchanges. My professors were very active in supporting me in these diverse areas of study, and through this I was able to acquire the knowledge I needed to understand the region. After graduating, I am continuing my studies at graduate school. I plan to use the expertise I have developed to work on the international stage as a diplomat.



WATCH ON YouTube

Interview videos with AY2023 graduates are available on the YouTube channel link on the right.



Live & Learn

OIC Global House for GLA students



The diverse shared spaces encourage interaction and communication.

Kotaro Matsuo
Second-year Student
Attended junior & senior high school of Kogakuin University



OIC Global House is known for its open environment, making communication between residents easy. Especially notable are the various shared spaces that facilitate interaction. Shortly after moving in, I became close with other residents through playing billiards, which helped me to quickly adapt to dormitory life. Trying my hand at cooking in the communal kitchen was also a valuable experience. Before moving in, I had never cooked for myself and was even afraid to hold a knife. Thanks to my fellow residents who taught me how to cook, from the basics of utensil handling to the nuances of seasoning, I have mastered several dishes. As I am about to embark on a year-long study journey in Australia, being able to cook for myself will undoubtedly serve as an asset that can facilitate my independent living in a foreign country. Additionally, the convenience of having the residence on campus makes time management easier. Unlike high school, university classes leave gaps in the schedule depending on how courses are taken. During such free periods, I can return to my dorm room to study or enjoy playing table tennis with friends. As someone who grew up in California, USA, I believe that the greatest allure of living in an international dormitory is the opportunity to experience a global environment. Living alongside peers from various countries and regions exposes me to diverse cultures and values, contributing to my personal growth.

International Dormitory

A constant learning experience

OIC Global House is an international dormitory that forms part of the Wakebayashi International Plaza completed at the Osaka Ibaraki Campus (OIC) in 2019. Many students of the College of Global Liberal Arts reside here to enjoy an experience of shared learning and shared living within the campus environment. Alongside 200 single bedrooms, the facility also offers a traditional tea room, a Japanese-style garden, a multipurpose hall with a Noh performance stage, and other spaces promoting diverse international encounters within a Japanese-themed cultural setting.



Faculty Members



Yuko Ishihara
Kyoto School Tradition, Phenomenology, Comparative Philosophy, Philosophy of Play



Mayumi Shimura
Intersection of International Politics and International Law, Peace Studies



Helena Čapková
Interdisciplinary Visual Art Studies, Exhibition Curating, Japanese Art History, Architecture and Design History



Saeeda Batool
Development Economics, Gender Inequality, Health Economics



Kayoko Fujita
History of Japanese Foreign Relations, Maritime Asian History, Global History of Material Culture



Miki Horie
Education, Intercultural Education, Educational Policy and Administration



Gian Powell Marquez
Biomass and Bioenergy, Sustainability Science, Marine Science, Environmental Biotechnology, Systematic Innovation



Norihisa Yamashita
Historical Sociology, Social Theory, Historiography



Saeko Ogiso
Foreign/Second Language Education, Japanese Language Education, Second Language Vocabulary Learning



Christopher Johnson
Moral Philosophy, Political Philosophy, Philosophy of Sport



Christophe Thouny
Cultural Studies, Modern Japanese Visual Culture/Literature, Urban Studies, Ecocriticism, Critical Theory



Miwa Hirono
China, Peacebuilding, Peacekeeping, Humanitarianism, Disasters, Conflict, East Asia, Developing Countries, Foreign Policy



Paul Haimes
Design Studies, Digital Design, Interaction Design (IxD), Human-Computer Interaction (HCI), Aesthetics, Interactive Art



Ichiro Maekawa
British Imperial and Commonwealth History



Noriko Yamagishi
Cognitive Psychology, Cognitive Neuroscience, Psychological Sciences, Vision, Attention, Emotion, Brain Science



Huseyin Rasit
Revolutions, State-Building, Ideologies, Media and Propaganda, Social and Political Theory, Middle East Studies

Scholarships

The two scholarships indicated below are open to GLA students studying at ANU in the Dual Degree Program.

Tuition Reduction for International Students with the "Student" Status of Residence

- 100% Reduction** – The amount of reduction will be notified with admission results.
- 50% Reduction**
- 20% Reduction** – Scholarship awards are based on merit: admissions results for the 1st year and academic grades for each year from the 2nd year onwards.

Scholarships Awarded to All Students Studying at ANU in the Dual Degree Program

- College of Global Liberal Arts Scholarship for Study Abroad 700,000 JPY** – Though students can receive both scholarships at the same time, neither of them can be awarded in combination with other scholarships specified in RU policies.
- Ritsumeikan University Study Abroad Challenge Scholarship 300,000 JPY** – These scholarships are awarded to the dual degree students only once.

The scholarship systems may be subject to change.

Fees

In taking the Dual Degree Program, tuition fees of ANU shall not be charged separately. However, travel expenses, dormitory fees, living expenses, etc. shall be paid by students. In addition, admission fees and miscellaneous membership fees are required.

Admission Fees and Tuition Fees 2024 Enrollees

(Unit : JPY)

Year 1				Year 2 and onwards		
Admission Fee	Tuition Fee for Spring Semester	Tuition Fee for Fall Semester	Total	Tuition Fee for Spring Semester	Tuition Fee for Fall Semester	Total
200,000	1,150,000	1,150,000	2,500,000	1,150,000	1,150,000	2,300,000

Miscellaneous Membership Fees 2024 Enrollees

(Unit : JPY)

Student Government Board		Parents Association of Student Education Assistance		Total
Registration Fee	Annual Membership Fee	Registration Fee	Annual Membership Fee	
3,000	5,000	5,000	10,000	23,000

*Membership fees for the Alumni Association and the Parents Association for Student Education Assistance are payable only in the first year of enrollment.