



SOPHIA PROGRAM FOR  
SUSTAINABLE FUTURES

PROSPECTUS 2025

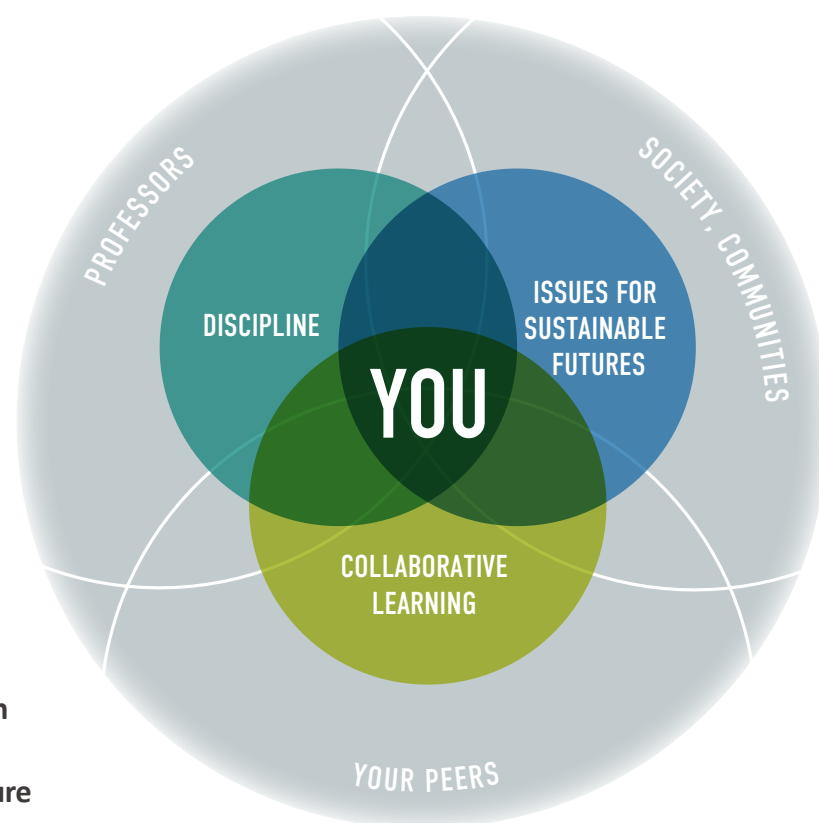
## A collage of images in the background. At the top is a tall, modern glass skyscraper. Below it is a red brick building. In the center is a large, blue and white image of the Earth. To the left, a young man in a light blue shirt points towards the right. Below him, two women are sitting on a bench, one in a blue shirt and one in a red shirt. To the right of the Earth, a woman with glasses is speaking into a microphone. At the bottom right, a young man in a blue t-shirt is smiling. The text 'TO CREATE OUR SUSTAINABLE FUTURES TOGETHER' is overlaid in large, white, bold, sans-serif capital letters. The word 'TOGETHER' is at the bottom and has a green-to-blue gradient shadow.

Across the World and Here in Tokyo

# SPSF EXPLAINED

## SPSF: A New Learning Environment to Create Sustainable Futures

The Sophia Program for Sustainable Futures provides students with a broad understanding of the world's diversities and teaches them the practical skills needed to contribute to building sustainable futures for others, with others. The students will learn about sustainability issues on a global and local scale and will collaborate with their peers and professors both on and off campus in order to determine how to achieve a sustainable future.



- Enhance Your Expertise in Your Department
- Broaden Your Horizons with an Interdisciplinary Approach
- Aiming to Build a Sustainable Future Together with Peers

### Interdisciplinary Approach

SPSF is designed to develop students' critical and creative thinking skills to help them to work in the global and local environment and find solutions to issues faced by the international community using an interdisciplinary approach. By interacting and collaborating with students from other majors, students will understand issues from multiple perspectives. That's what makes SPSF so unique!

### All Nine Faculties on One Campus

Sophia University has a compact footprint that brings together all faculties on a single campus. It allows SPSF to coordinate discipline-based courses seamlessly across six departments and offer an interdisciplinary learning environment at the same time.

### All Courses Conducted in English

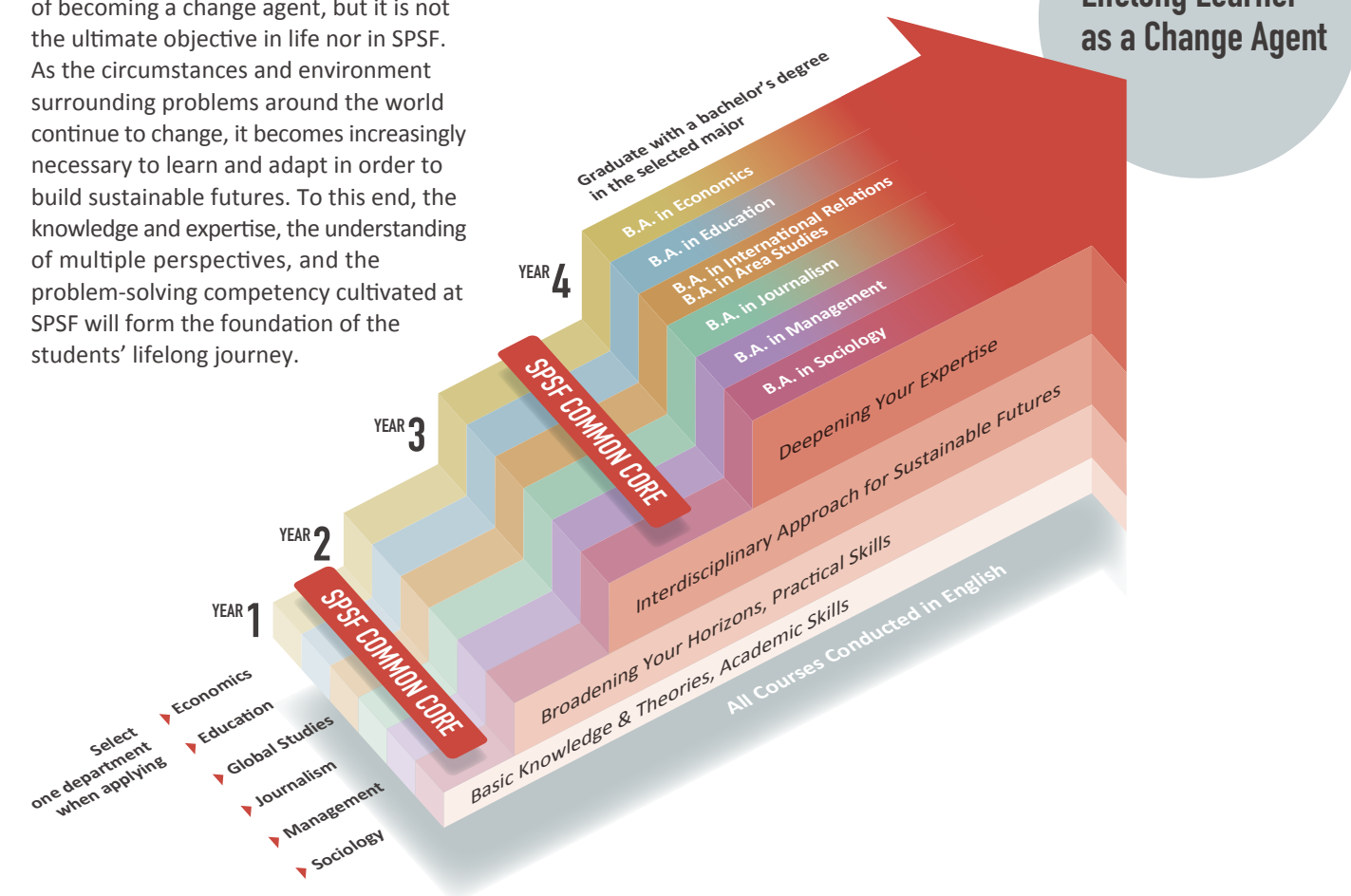
SPSF aims to create a learning environment free from conflicts of interest, where students from diverse backgrounds around the world can discuss their futures and deepen their understanding of each other's perspectives. In order to do this, English is used as the common language in which all participants communicate. With slightly more limited credits, courses conducted in Japanese are also available for SPSF students who wish to improve their Japanese-language proficiency or for those who are interested in courses relating to their respective specialized fields of study that are offered outside SPSF.

### Offering Bachelor's Degrees in Specialized Fields of Study

SPSF students can study under the common core theme "sustainable futures" together with students from other disciplines to further their understanding of the theme and to obtain a bachelor's degree in one of seven disciplines when they graduate.

## The Journey to Becoming a Change Agent in Creating Sustainable Futures

Obtaining a degree is part of the process of becoming a change agent, but it is not the ultimate objective in life nor in SPSF. As the circumstances and environment surrounding problems around the world continue to change, it becomes increasingly necessary to learn and adapt in order to build sustainable futures. To this end, the knowledge and expertise, the understanding of multiple perspectives, and the problem-solving competency cultivated at SPSF will form the foundation of the students' lifelong journey.



### A Pioneer in Global Education in Japan

Sophia University now has 70 years of experience in providing courses in English and developing programs in which students can obtain credits solely in English. The knowledge obtained through the many years of experience is utilized in the development of SPSF.

### Learning on & off Campus

Students will have opportunities for internships, field research, and other initiatives that foster practical learning in Japan and abroad. A variety of other opportunities such as study-abroad programs at affiliated universities, internships abroad, and international field studies are also offered.

### Message from SPSF PROGRAM COORDINATOR

Creating a sustainable future is not a responsibility to be delegated to others, but rather a challenge we must tackle together. SPSF acknowledges the interdependence in sustainability and adopts an interdisciplinary approach that spans various fields in the social sciences, encompassing nature, society, and our future. We also offer global internships, clubs, and extracurricular activities dedicated to promoting sustainability. Let's shape a sustainable future together!

Professor  
Dr. Hideki MARUYAMA



YOUR FOUR YEARS at SPSF

	YEAR 1		YEAR 2		YEAR 3		YEAR 4	
	Autumn	Spring	Autumn	Spring	Autumn	Spring	Autumn	Spring
SPSF Common Core	Theme-based First-Year Lecture in/about SF				Theme-based Third-Year Seminar for SF			
	Academic Skills Academic Writing 1	Academic Skills Academic Writing 2						
	Academic Skills Academic Presentations	Academic Skills Critical Thinking & Discussion						
Specialized Education of the selected fields of study ▶ Dept. Info P. 5-10	Courses offered by Dept. of Economics	Interdisciplinary Learning					Bachelor's thesis	
	Courses offered by Dept. of Education						Bachelor's thesis	
	Courses offered by Dept. of Global Studies						Bachelor's thesis	
	Courses offered by Dept. of Journalism						Bachelor's thesis	
	Courses offered by Dept. of Management						Bachelor's thesis	
	Courses offered by Dept. of Sociology						Bachelor's thesis	
	Foreign language courses taught in English							
General Studies	Compulsory & elective courses including foreign language courses taught in Japanese							
Others			Internships					
			Study Abroad					
			Social Engagement Programs					
			Off-Campus Programs / Life Events					



Lectures and seminars for Sustainable Futures.

First-Year Lecture in/about Sustainable Futures

This lecture course is required for all SPSF first-year students. The six departments provide lectures related to each discipline of sustainability, while the SPSF coordinator shares the latest studies on sustainability and develops the lecture content from each department. Students learn about issues related to the various disciplines and engage in discussions that connect this broad content through the all-encompassing perspective of sustainability. The course deals with the basics of sustainability study and academic discipline in order to work towards sustainable futures.

Third-Year Seminar for Sustainable Futures

This seminar course is also required to integrate the contents of various lessons the SPSF students have learned. Students bring their knowledge and skills to collaborate in addressing global and local issues related to sustainable futures. The seminar will be based on PBL style and potentially offer off-campus programs such as internships, study tours abroad, and online lessons. The students set their groups for common selective issues about sustainability and develop a solution after researching and analyzing the backgrounds and structures of the issues.

Other activities may need the extra semester(s) to graduation.

“SPSF Common Core” The Required Courses for All SPSF Students.



As all of these compulsory classes are conducted in small classes (about 10 people), I personally enjoyed that I was able to connect more not only with peers but also with the professor. I feel like college can be full of classes with even hundreds of students where your distance from your professor can make it difficult to seek help when needed. In contrast, the Academic courses were more personalized and easy to keep on track as there were often times when professors would talk to you one-on-one which really helped.



The Department of Management Usaburo MENDENHALL



The Department of Journalism Maya YAMADA

I get quite nervous standing and presenting in front of other people, so this definitely pushed me out of my comfort zone. These classes give the basics of what will be used throughout university life. Academic writing was especially important considering we have to write a lot of reports and cite sources.



The General Studies courses provide a balance in class format compared to the small-sized SPSF classes, allowing me to meet and exchange opinions with students from Japanese departments too. I have enjoyed taking 'Mixed Roots Identity and Transnational Identity' by Professor Rooks since it gave me an opportunity and space to rethink and embrace my cultural identity. 'Cultural Revitalization and Community Building' by Professor Mizutani, has also opened my eyes on communities I was ignorant about.



The Department of Sociology Sana HORIKAWA



The Department of Economics Prakash SAPKOTA

Among the General Studies courses, I loved the class 'Philosophy of the Human Person' taught by Professor Haidar. Despite being online during the pandemic, this course was very interesting as it introduced me to the world of Philosophy through its easy-to-follow lectures and readings. Sometimes, I would ponder topics such as moral dilemmas and human freedom for days.



DEPARTMENTS

DEPT. OF ECONOMICS

Do you want to learn how economics can be used to provide insight into real-world, social and economic phenomena, as well as enhance logical thinking skills? Join us at the Department of Economics, where we teach you basic and advanced economic concepts, such as macroeconomics, microeconomics, and sustainable development. You will also apply your analytical skills to examine various issues associated with developing sustainable societies in a range of settings. You will have the opportunity to take courses in other Sophia University Departments and develop knowledge of other areas where economic concepts can be applied. Our courses feature small class sizes to promote active discussion between students and lecturers. We welcome self-motivated applicants who are interested in improving their understanding of the socio-economic issues occurring in modern society.

CURRICULUM

As of AY2024

		First-year	Second-year	Third-year	Fourth-year
SPSF Common Core		Refer to page 3 and 4.			
Specialized Education	Compulsory	Introduction to Microeconomics	Introduction to Data Analysis		
		Introduction to Statistics			
		Introduction to Macroeconomics			
	Electives	Research, Discipline, and Other Major Core (Compulsory Electives); Environmental and Natural Resource Economics, Poverty in the Global Economy, Economics of Social Policy, Global Development Goals, Bachelor’s Thesis, etc.			
	Interdisciplinary Learning				
General Studies		Refer to page 3 and 4.			
Language					



Associate Professor Dr. Matthias SCHLEGL

Economics is the study of how individuals, businesses, and governments make choices about the use of scarce resources. Sustainability is therefore an important consideration in the economic analysis of societal challenges such as inequality, globalization, environmental problems or financial instability. Our interdisciplinary approach allows students to acquire a broader view on these issues and to think about sustainability from an integrated perspective.

I think that the Economics program within SPSF provides a unique opportunity to specialise in economics at a high level, which is an option at only a select number of other English-medium undergraduate courses in Japan. Specifically, the Economics program within SPSF provides the chance to study at a internationally competitive level, with highly demanding seminar courses to prepare students for entrance to international graduate programs.



The Department of Economics Keita Robert Hooker YOSHIKAWA

DEPT. OF EDUCATION

The Education major at the Department of Education explores education and human development from international and interdisciplinary perspectives. You will take three core courses on Comparative Education, International Education, and Education and International Development, and three foundations courses on Curriculum and Instruction, Philosophy of Education, and Sociology of Education. The major prepares future educators, researchers, and global citizens who can create education for sustainable futures that respects human dignity. We look forward to welcoming you to our program.

CURRICULUM

As of AY2024

		First-year	Second-year	Third-year	Fourth-year
SPSF Common Core		Refer to page 3 and 4.			
Specialized Education	Compulsory	Introduction to Educational Studies Introduction to Comparative Education Comparative Education in Asia International Education Education and International Development Curriculum and Instruction			Research in Education Bachelor's Thesis/ Bachelor's Graduation Project
	Electives	Special Topics in Education 1-5 SPSF Research Methods SPSF Fundamentals		Undergraduate Seminar in Education 1-4	
	Interdisciplinary Learning				
General Studies		Refer to page 3 and 4.			
Language					



Associate Professor Dr. Maria MANZON

In the words of our students: "education is at the core of many sustainability issues"; "education is the foundation for achieving sustainability by spreading its importance to society". Education is key to sustainable futures. Quality education (SDG 4) is central to all the other SDGs. It is through education that we can nurture minds, hearts, and hands for sustainable futures.

In the SPSF curriculum, many of the courses are conducted in smaller classes, therefore we often have the opportunity to have critical discussions with our classmates. During our discussions, I enjoy exchanging opinions with others of different perspectives, backgrounds, and academic interests. The discussion with students among the 6 SPSF departments has been a great chance for me to widen my viewpoint and understanding.



The Department of Education Mana UEDA

DEPT. OF

GLOBAL STUDIES

The Faculty of Global Studies (FGS) offers a unique opportunity for students to study both International Relations and Area Studies, enabling them to develop an interdisciplinary perspective on pressing global issues. Majoring either in International Relations or Area Studies in their third year, students engage in small-sized classes and seminars and learn through lively group discussions. The flexible curriculum allows students to explore other departments, learn foreign languages, and study abroad. Students broaden their horizons and develop skills for their future careers. Join FGS and become part of a community dedicated to making a positive impact on society both in Japan and worldwide.

CURRICULUM

As of AY2024

		First-year	Second-year	Third-year	Fourth-year
SPSF Common Core		Refer to page 3 and 4.			
Specialized Education	Compulsory	Introduction to Global Studies	Academic Skills for Global Studies		Bachelor's Thesis
		Introduction to International Relations			
		Introduction to Area Studies			
	Electives	200 level Global Studies (GS), International Relations (IR), Area Studies (AS)			
			Major & Minor 300-400 level (IR/AS)		
				Seminar 1&2	
		Other Core Category2 courses, FGS Electives, FLA courses, FFS courses, CLER courses etc.			
Interdisciplinary Learning					
General Studies		Refer to page 3 and 4.			
Language					



Associate Professor

Dr. Ayako KOBAYASHI

**S**PSF enriches students' learning experience by fostering diverse perspectives. Engaging discussions highlight the complexities of global goals and tailoring solutions to local contexts, considering diverse histories, cultures, and social systems. SPSF sparks a profound interest in sustainable development issues intricately woven into our daily lives, empowering students to make meaningful contributions in our ever-evolving world.

**I** believe the department offers various areas which gave me an insight into other departments, realizing other interests I did not have before. The first-year lecture on SPSF was one of the first ways I have gotten an idea of other departments to develop an understanding and extend my interests from the course. I am also hopeful for the future of this program to offer more variety of courses, as new departments are being introduced to the program.



The Department of Global Studies

Yuto TOYOSHIMA

DEPT. OF

JOURNALISM

Journalism is a major that examines the impact of media and communication on our world and future. The Department of Journalism's Sophia Program for Sustainable Futures offers a unique program that emphasizes the role of journalists and media organizations in shaping a better tomorrow. Students will acquire both theoretical knowledge and practical skills in journalism and communication while addressing real-world issues related to sustainable futures. Through seminars and a graduation dissertation, students will also develop their critical thinking and analytical abilities. If you have a passion for journalism and sustainability, we invite you to join our program.

CURRICULUM

As of AY2024

		First-year	Second-year	Third-year	Fourth-year
SPSF Common Core		Refer to page 3 and 4.			
Specialized Education	Compulsory	Communication 1	Seminar 2	Seminar 3	Bachelor's Thesis
		Seminar1 (Media Research)			Seminar 4
	Electives	International Communication 1-2			
		Mass Media1-2, Reporting English1-3, Ethics of Mass			
		Communication1-2, etc.			
		Language (Japanese / Chinese / French / Spanish)			
		Introduction to Global Media, Media Research, Global Media Program, etc.			
		Interdisciplinary Learning			
General Studies		Refer to page 3 and 4.			
Language					



Associate Professor

Dr. Tomoki KUNIEDA

**T**he Department of Journalism focuses on sustainable futures. To achieve the SDGs, we need to share facts and ideas across contexts. We will learn about journalism and media communication and their roles in addressing environmental and social issues. This program aims to develop students' skills and abilities for sustainable futures.

**A**t first, I thought that I couldn't fit in well because of the language and cultural differences, however after two years of study, the diversity and inclusive environment have created a unique academic atmosphere in the department, which helped us work on several problems globally, such as the cross-cultural communication cases. Through multiple cultural considerations, we found more possible solutions and perspectives on the topic of global warming, sustainable journalism, and world peace cases. Also, the globalization process made most social problems more complicated. Still, when conducting the team discussion with students from all over the world, we found more possibilities and opportunities.



The Department of Journalism

Jialin YANG

DEPT. OF

MANAGEMENT

Business plays a vital role in tackling contemporary societal challenges by developing innovative business models. Our mission is to nurture aspiring leaders who can make rational decisions and catalyze transformative shifts in organizations and communities. Students sharpen their evidence-based critical and analytical thinking skills through our specialized curriculum across areas such as accounting, entrepreneurship, marketing, organization, and strategy. Foreign language and cross-departmental courses, as well as study abroad programs enhance students' transdisciplinary and global communication skills. We welcome applicants to join us in identifying problems and finding solutions to create a sustainable future as the next generation of business leaders.

CURRICULUM

As of AY2024

		First-year	Second-year	Third-year	Fourth-year
SPSF Common Core		Refer to page 3 and 4.			
Specialized Education	Compulsory	Introduction to Management			
	Electives	<ul style="list-style-type: none"> <li>● Methodology; Challenging Frontline Issues in Global Business, etc.</li> <li>● General; Principles of Accounting, Principles of Management, Principles of Marketing, etc.</li> <li>● Specialized; Consumer Behavior, Financial Accounting, Strategic Management, Global Branding, Research Seminar in Management, Bachelor's Thesis, etc.</li> </ul>			
		Interdisciplinary Learning			
General Studies		Refer to page 3 and 4.			
Language					



Associate Professor Dr. Taku TOGAWA

Management, being a wide-ranging field, offers students the opportunity to explore various career paths. As a high school student, I remember feeling uncertain about my future career. However, taking management courses like marketing, accounting, economics, and entrepreneurship allowed me to try out different subjects and gain clarity about my goals and interest.



The Department of Management Usaburo MENDENHALL

DEPT. OF

SOCIOLOGY

Sociology is the study of how social surroundings influence and are influenced by human behavior and consciousness. Sociologists critically question social reality to understand and improve social phenomena. Sociology covers all aspects of life, from personal relationships to global issues. Our curriculum aims to foster intellectual curiosity and critical interest in human society. By teaching students how to analyze and comprehend our complex world with sociological theory and methodology, we help students understand the various dimensions of modern society as well as their relation to social structure and change. This enables our students to develop skills to propose solutions for an inclusive and sustainable society.

CURRICULUM

As of AY2024

		First-year	Second-year	Third-year	Fourth-year
SPSF Common Core		Refer to page 3 and 4.			
Specialized Education	Compulsory	Principles of Sociology	Sociological Theory1&2	Advanced Seminar in Sociology	
		First Year Seminar in Sociology	Qualitative Methods in Sociology		
		Quantitative Methods in Sociology Sociological	Introduction to Statistics		
	Electives	Environmental Sociology, Contemporary Social Problems, Social Change in Postwar Japan, Sociology of Families, Sociology of Globalization, Sociology of Happiness, Work and Employment in Japan, Special Topics in Sociology 1-2, Bachelor’s Thesis, etc.			
		Interdisciplinary Learning			
General Studies		Refer to page 3 and 4.			
Language					



Professor Dr. Carola HOMMERICH

The interdisciplinary courses held by the SPSF program are helpful in providing opportunities to holistically approach the topic of Sustainability. By gaining new perspectives from courses of different fields and through discussions with peers from diverse backgrounds, the SPSF program encourages students to critically analyze the possibilities as well as the challenges we face in attaining a sustainable future which I believe is something of vital importance in current society.



The Department of Sociology Riki KOGURE



# STUDENTS' LIFE at SOPHIA U



**Keita Robert Hooker**  
YOSHIKAWA  
The Department of Economics

I participate in KASA sustainability which is a club that promotes sustainability on campus. KASA sustainability engages in a number of projects on campus such as composting and the operation of an on-campus garden. These activities are very rewarding as I can engage with students from diverse backgrounds including those who are in graduate and doctoral programs at Sophia. Together, we work toward developing a more sustainable university environment.



**Mana UEDA**  
The Department of Education

I am currently the vice representative of the school event planning and organizing circle, "nexnect". Our circle organizes several school events throughout the year, but our most popular events will be Yukata Day (held in July), and Autumn Freshman Week (October). I enjoy seeing students and staff participating and having fun in the events organized by nexnect, and this circle has been a great place for me to develop my teamwork skills.



**Tigha MITSUHASHI**  
The Department of Education

I'm currently part of the table tennis club at Sophia, and I am currently taking the role of vice captain at the time of writing. Table tennis being a sport that anyone can enjoy at any age, developing your skills in it can be worthwhile and fun. For me personally, being part of the club has helped me grow as a person and I enjoy every moment of it.



## EXTRACURRICULAR ACTIVITIES

You can meet lifelong friends!"

## "How is your dormitory life?" DORMITORY LIFE

**Poonyaporn SUTHAMPORN**  
The Department of Sociology

Surrounded by residents from diverse nationalities and upbringings, I was able to learn and experience different cultures beyond the university environment through dorm events such as the welcome event, summer festival, cultural night etc. At the dorm, I am also currently a Living Group Leader (LGL) as I wanted to be a small part in forming an enjoyable living experience where residents connect with one another and engage in different activities together.



**Sana HORIKAWA**  
The Department of Sociology

Living in Arrupe dorm with 6 other people has been fun yet also a learning experience. I have been able to grow my community and create a different kind of connection with my dorm mates, who are always there to welcome me home. Being with other Sophia students and seeing their lifestyles and cultural practices at a personal level every day, I have been able to truly learn more not only about others, but also myself.

**Tigha MITSUHASHI**  
The Department of Education

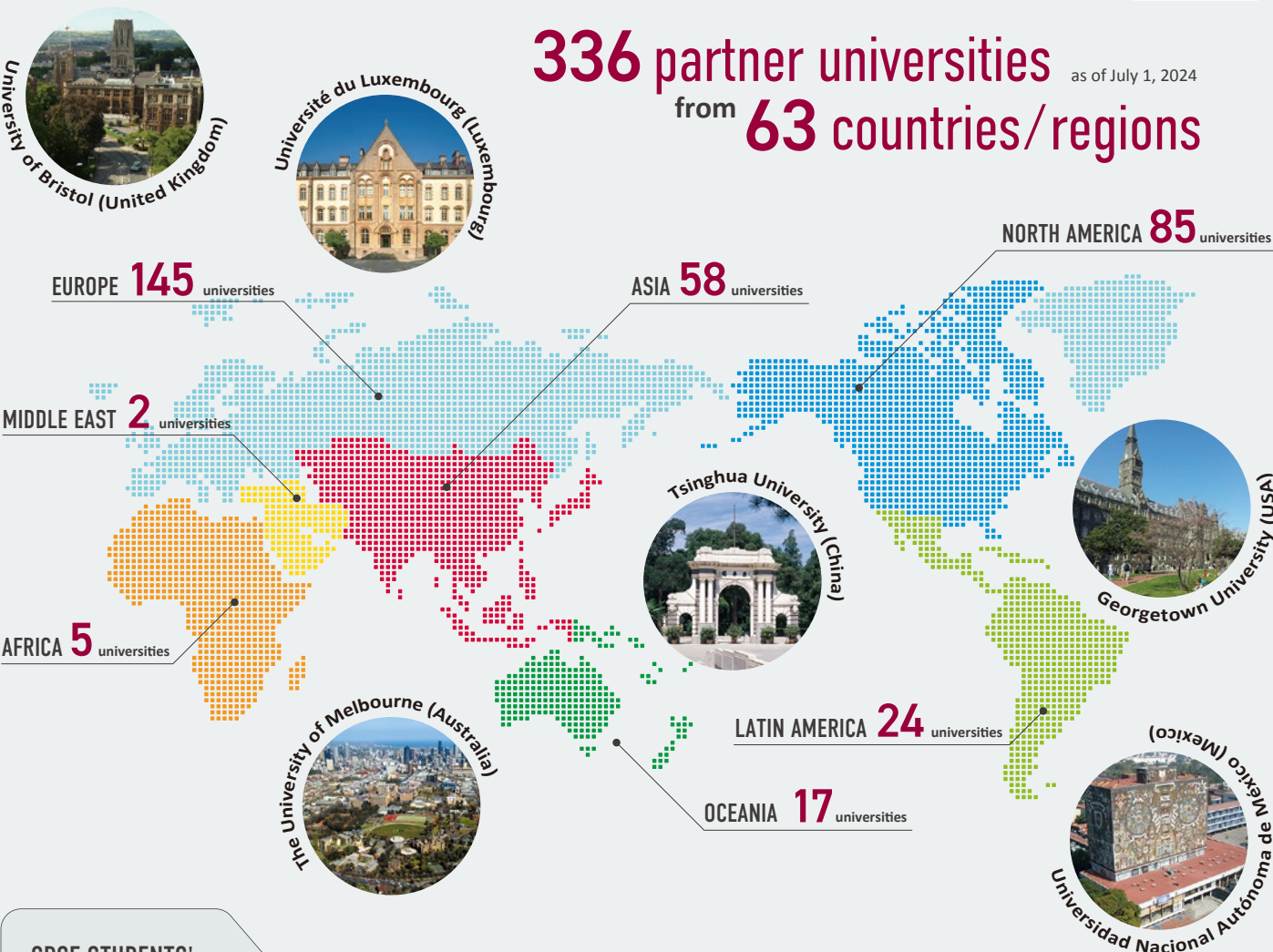
The Sophia Edagawa Men's Dormitory is quite unique compared to other dormitories as the student life is more independent. For individuals who want to grow, and develop a sense of independence, the Sophia Edagawa Men's Dormitory is a great place to start.

# STUDY ABROAD



Find Out More

**336** partner universities  
from **63** countries/regions  
as of July 1, 2024



### SPSF STUDENTS' STUDY ABROAD DESTINATIONS

AUSTRALIA	Royal Melbourne Institute of Technology The University of Melbourne The University of Sydney
CANADA	McGill University University of British Columbia
CHINA	The University of Hong Kong*
CZECH REPUBLIC	Charles University, Faculty of Arts Anglo-American University
FINLAND	Aalto University School of Business
FRANCE	ESSEC Business School Université Paris-Dauphine
SWEDEN	University of Gothenburg
U.K.	The University of Edinburgh University of Bristol University of Leeds University of London the School of Oriental and African Studies (SOAS)
U.S.A.	Saint Joseph's University The University of Notre Dame du Lac University of Colorado Boulder The New School The University of Texas at Austin University of Miami

Hong Kong\*: Special Administrative Region of the People's Republic of China

**Hana SAEKI**

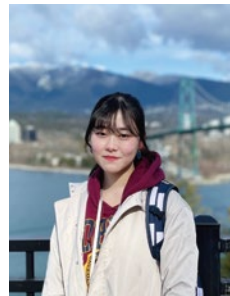
The Department of Global Studies

#### How was your study abroad?

Studying abroad in Canada helped me recognize my interests in multiculturalism and how salad societies work by allowing inclusive open discussions, empowering and accepting different communities, and overcoming challenges together. It helped me notice and share differences between Japan and Canada to my friends while learning my own strengths and capabilities!

#### Message for prospective students

Studying abroad can be intimidating. However, everything you experience will make you far more confident, resilient, open to new perspectives, and prepared for anything in the future. If exploring and connecting with people all around the world is something you want to try, then studying abroad is the perfect opportunity!





# GRADUATION RESEARCH

The first SPSF cohorts are expecting their graduation AY2024 in autumn.  
Nineteen students completed the thesis/project in 2024!

**Q: What is your thesis theme?**

**Framing Climate Change in Japan:  
How Government Ministries and  
Climate Justice Activists  
Shape Climate Change Discourses**

**Mana SHORT**  
Department of Global Studies

**Tigha MITSUHASHI**  
Department of Education

**Jukus and their Effects on  
Students' Attitudes towards  
Mainstream Schooling: A Case Study in Tokyo**

**Q: How does your thesis/topic relate to sustainable futures?**

**Mana:** Environmental discourses deeply influence our understanding of and response to sustainability challenges like the climate crisis. Some narratives dominate while others are marginalized. My thesis critiques the hegemonic framings of climate change shaped by government and corporate actors, which often promote market-based solutions and neoliberal agendas. By highlighting alternative visions and counter-discourses from civil society actors, my study emphasizes the importance of justice, fairness, and equity when creating sustainable futures.

**Tigha:** Education is related to sustainable futures as we take part in it to make positive changes for future generations. Jukus, in particular, can lead to inequalities in economic, social, and cultural capital. Research in education can help bridge the gap caused by it.

**Q: Overall, what SPSF experiences, both positive and challenging, do you want to share with other students?**

**Mana:** SPSF has expanded and deepened my understanding of today's complex challenges, equipping me to think more systemically and work more collaboratively. The small class sizes have allowed for personalized hands-on learning and the opportunity to build close connections with professors and peers. I'm grateful for how this program has nurtured my skills in a range of areas, including critical thinking, problem-solving, collaboration, creativity, empathy, and leadership.

**Tigha:** The whole process of researching for and writing the graduation thesis is a lengthy and challenging experience. However, due to SPSF's small class size and close communication between classmates and professors, we can receive very useful feedback for which I am grateful. In addition, SPSF's interdisciplinary approach has helped a lot in my thesis as I was able to use a combination of frameworks from both sociology and education.

**Q: Write your short message to prospective students.**

**Mana:** What I appreciate most about SPSF is that it gave me a focused framework for my learning that enabled me to deep dive into a wide range of sustainability issues. While specializing in a particular field, you still have the freedom to explore other areas in an interdisciplinary way. There are also many opportunities outside the classroom to engage in creative projects, making Sophia a stimulating environment to be in.

**Tigha:** University is a place where a wide range of experiences is possible. So don't be afraid to try new things whether they be hobbies, clubs, or classes. You only have one life and university may become the last chance to have the freedom to explore the horizon of possibilities. Anyhow, good luck to your future endeavors.

## SPSF STUDENTS' THESIS / PROJECT TITLES

\*Only some titles are shown.

The Confluence of Human Rights and Artificial Intelligence (AI) in Smart Cities

Public School Funding Gaps in America: Mapping the Relationship Between Home Price and High School Student Outcomes in King County, Washington

Heteronormativity as Lived Experiences of Gay Undergraduate Students in Japan

How Does the Societal Perception of Disability Shape Support Measures? A Comparative Study of Japan and Nicaragua

Determinants of Environmental Literacy and its Relationship to Pro-environmental Behaviors among Youth in Thailand

Digital Transformation Analysis for Japanese Rural Revitalization

Fighting Misogyny with Hate: Observing Digital Activism of Women-led Anti LGBTQ Countermovements in Japan

Perceptions of University Academics on the Outcomes and Future Directions of MEXT's English Education Policies

The Significance of the US Housing Market for the 2008/2009 Financial Crisis

# SPSF FACTS and FIGURES

**Program Name:**  
Sophia Program for Sustainable Futures (SPSF)

**Enrollment:**  
September (Autumn semester)

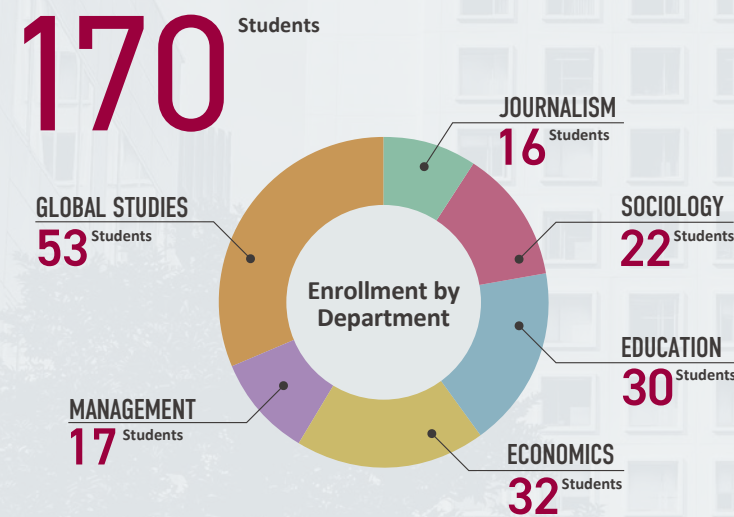
**Establishment:** In 2020\*  
\* Initial student enrollment was in 2020 in the four departments: Economics, Education, Global Studies, and Sociology. The two departments, Journalism and Management, began accepting students every year in succession the following academic year.

**Structure:**  
Undergraduate Program, Six Departments: Economics, Education, Global Studies, Journalism, Management, Sociology

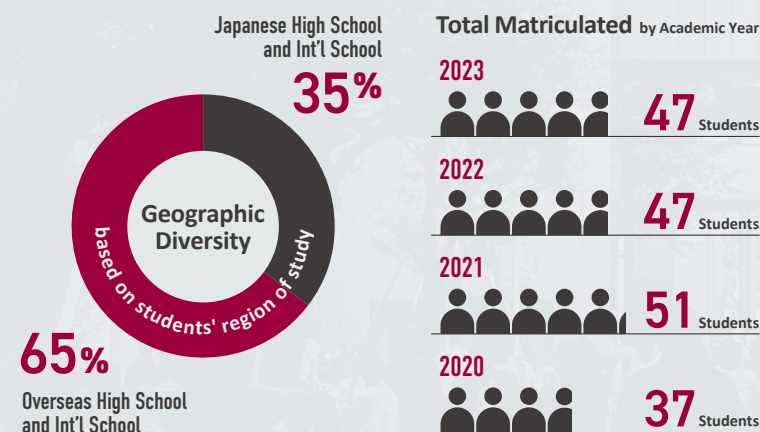
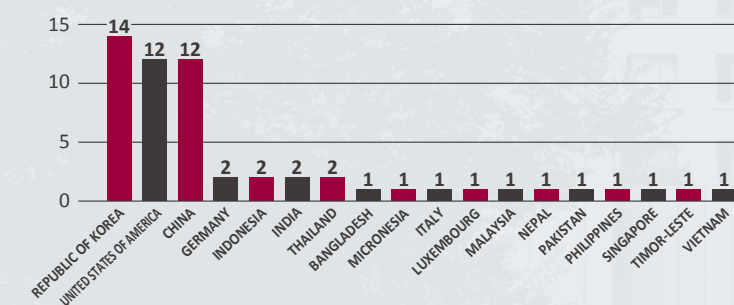
**Degree (B.A.):**  
Journalism (Dept. of Journalism)  
Education (Dept. of Education)  
Sociology (Dept. of Sociology)  
Economics (Dept. of Economics)  
Management (Dept. of Management)  
International Relations (Dept. of Global Studies)  
Area Studies (Dept. of Global Studies)

## FIGURES as of MAY, 2024

Total Enrollment



Nationality (Non-Japanese)



## SPSF FAQ

**Q: Is the SPSF's enrollment intended for Japanese high school graduates or overseas high school and international school graduates (including international students)?**

**A:** Both are possible. The program starts in autumn semester, which makes it easier for international students, returnees, and students from international / overseas schools to enroll. Of course, graduates of Japanese high schools are also welcome to enroll.

**Q: What languages can SPSF students learn?**

**A:** SPSF is a program entirely taught in English, not a program studying English as a foreign language. For languages other than English, students can take language courses offered in English (e.g., Japanese and Chinese) and language courses offered in Japanese (e.g., German and Korean). There are 21 languages students can study.

**Q: What is the difference between SPSF and the Faculty of Liberal Arts (FLA)?**

**A:** At the SPSF, students focus on the majors in their own department. Students take major courses in their department from the first to the fourth year. At the same time, students take SPSF common core courses in which students from six departments study together, such as courses on the theme of 'Sustainable Futures' and Academic Skills in English, and also take courses in the disciplines of the other departments of the SPSF. Meanwhile, the FLA offers a liberal arts curriculum, which provides students with an academic foundation and intellectual orientation before they choose a disciplinary major. The first year of study in the FLA is devoted to basic education, including the Core Program, General Studies courses, and language. From the second year onwards, the FLA curriculum requires students to choose a major from three fields (Comparative Culture, International Business and Economics, and Social Studies). The degree awarded is a Bachelor of Arts in Liberal Arts. The SPSF and FLA thus have significant differences in curriculum and degrees.

**Q: Can I take classes which are taught in Japanese in the same department?**

**A:** Yes, it is possible. Sophia offers a broad range of specialized courses which are taught in Japanese, which SPSF students can also take. However, please note that up to 24 credits of courses taught in Japanese count towards graduation requirements. Please make sure to plan your course of study carefully in consultation with your department advisor, considering the graduation requirements.



## FINANCIAL ASSISTANCE

Various types of scholarships and financial aids are available.

### Applications accepted at the time of admission application

- **New Student Scholarship**

We offer either 1/3, 1/2, or full tuition reduction for the first year.

- **Adachi Scholarship for international students from Southeast Asia and Africa**

We offer the full tuition and education enhancement fee reduction for the first year.

### Other financial aid programs:

[Applications accepted after entrance]

[https://piloti.sophia.ac.jp/eng/scholarships1/scholarship\\_e0005/](https://piloti.sophia.ac.jp/eng/scholarships1/scholarship_e0005/)



## HOUSING SUPPORT

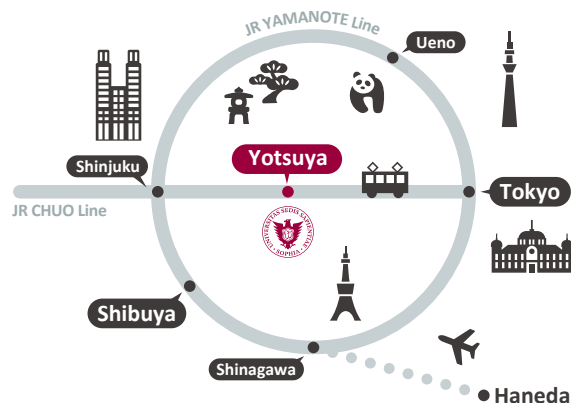
- **Sophia University has several off-campus dormitories and offers affiliated housing options.**

<https://piloti.sophia.ac.jp/eng/housing/>



### In the Heart of Tokyo

The area around the campus has long been a hotspot of Japanese politics, economy, and culture. It is a place where you can feel the dynamism of the global city of Tokyo and enjoy a rich cultural experience that offers easy access to a variety of historical sites and cultural institutions such as museums, theaters, and libraries.



## REGULAR ADMISSIONS

[ DOCUMENT SCREENING ]

- **For First-year Students**

Acceptance decisions are made on the basis of SAT/ACT/IB Diploma/GCE A Level scores (grades), TOEFL/IELTS scores, official high school transcripts, an essay, and two recommendation letters.

- **For Transfer Students (Third-year)**

Those who are expected to complete at least two full academic years or more of university/college education as full-time students can apply to SPSF\* as transfer students\*\*.

\* Departments:

Economics, Education, Global Studies, and Sociology.

\*\* They must complete at least two years of study in residence in order to receive a Sophia University degree.

- **Application Period**

[ First Period ] November 13 – December 6

First-year Students

[ Second Period ] March 12 – April 2

First-year Students

Transfer Students

[https://adm.sophia.ac.jp/eng/admissions/ug\\_p/en\\_ug/spsf/](https://adm.sophia.ac.jp/eng/admissions/ug_p/en_ug/spsf/)



## TUITION

[ FOR REFERENCE, AS OF AY2024 ]

First year: ¥1,584,650

[https://piloti.sophia.ac.jp/eng/tuition/gakuhi\\_undergraduate/](https://piloti.sophia.ac.jp/eng/tuition/gakuhi_undergraduate/)



上智大学  
SOPHIA UNIVERSITY

### Sophia University Admissions Office

7-1 Kioi-cho, Chiyoda-ku, Tokyo 102-8554, Japan

EMAIL : [admission-u-co@sophia.ac.jp](mailto:admission-u-co@sophia.ac.jp) TEL : +81-3-3238-4018

[www.sophia.ac.jp/eng/](http://www.sophia.ac.jp/eng/)

FIND OUT MORE ON SPSF OFFICIAL WEB

Sophia SPSF Academics



リサイクル適性 (A)  
この印刷物は、印刷用の紙へ  
リサイクルできます。